

KPBDB-LNN

溢流阀

说明 DESCRIPTION

A cartridge-style fast-acting balanced piston relief valve
快速响应型, 先导滑阀式溢流阀

工作 OPERATION

The valves are normally closed, pressure-limiting valves used to protect hydraulics components from pressure transients. Fast opening and closing is gained at the expense of smoothness. When the pressure at the inlet (port ①) reaches the valve setting, the valve starts to open to tank (port ②), throttling flow to limit the pressure rise. These valves have low pressure rise vs. flow and are very fast. Back pressure on the tank port ② is directly additive to the valve setting at a 1:1 ratio.

快速响应先导式滑阀型溢流阀用于保护系统的压力瞬时过载, 快速启闭时仍能保持系统平稳性。当①口压力超过阀的设定时, ①口到②口溢流过载, 限制系统压力升高, 该阀对压力反应灵敏。
②口背压会按 1:1 叠加到阀的设定压力上。

技术参数 SPECIFICATIONS

最大工作压力 (Max. Operating Pressure): 350bar

流量 (Capacity): 60 L/min.

弹簧调压范围 (Standard Spring Ranges):
 A: 7-210 bar, preset 预设定: 14bar
 B: 3.5-105 bar, preset 预设定: 14bar
 N: 4- 55 bar, preset 预设定: 14bar
 Q: 4- 28 bar, preset 预设定: 14bar
 W: 10.5-315 bar, preset 预设定: 14bar

附加选项 (Additional Options): C: 10.5-420 bar, preset 预设定: 14bar
 D: 1.7- 55 bar, preset 预设定: 14bar
 E: 1.7- 28 bar, preset 预设定: 14bar
 G: 4-210 bar, preset 预设定: 14bar
 K: 5-105 bar, preset 预设定: 14bar
 P: 2.8- 28 bar, preset 预设定: 14bar

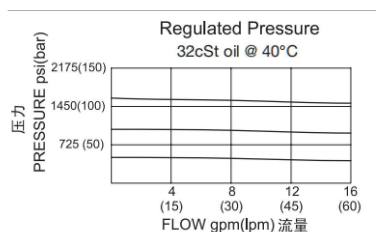
温度 (Temperature): -40° F to +250° F (-40° C to +120° C)

油液 (Fluids): Mineral-based fluids with viscosities of 7.4 to 420 cSt. (矿物油粘度)

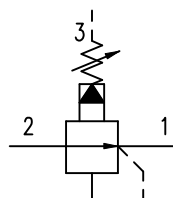
插孔 (Cavity): T-11A

阀块材料 (Body Material):
Steel & Ductile iron rated to 350bar 钢和球铁允许使用最大压力350bar

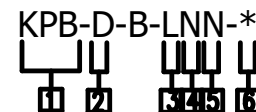
压力-流量曲线 PRESSURE DROP VS. FLOW



符号 SYMBOL



订货代号 TO ORDER



1 功能
KPB=先导式减压阀
Cartridge-style Pilot-operated
Spool-type Pressure
Reducing Valve

2 流量 Capacity
D=60L/min

3 控制方式 Control
L= 标准螺钉调节
Standard Screw Adjustment

5 油封 SEAL KITS
N=Buna N
V=Viton

4 弹簧调压 Spring Ranges
A=100-3000psi (7-210bar)
Preset: 200psi (14bar)
B=50-1500psi (3.5-105bar)
Preset: 200psi (14bar)
N=60-800psi (4-55bar)
Preset: 200psi (14bar)
Q=60-400psi (4-28bar)
Preset: 200psi (14bar)
W=150-4500psi (10.5-315bar)
Preset: 200bar (14bar)

6 阀块油口 BODY PORTING
空白 Blank= 不带阀块 None
6T=SAE6
8T=SAE8
3G=G 3/8
4G=G 1/2

安装尺寸 INSTALLATION DIMENSIONS

