

KPS50L-36A-0-N-15

先导式顺序阀

说明 DESCRIPTION

A cartridge-style pilot-operated spool-type sequence valve with internal pilot and spring chamber drain

内控内排，滑阀型先导式顺序阀

工作 OPERATION

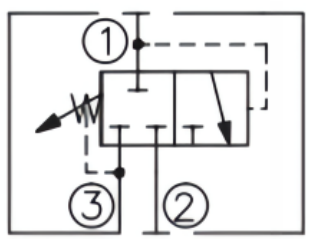
In its steady state, the valve blocks flow from ① to ②, with the spring chamber drained at ③. On attainment of a pre-determined pressure at ①, the cartridge shifts to open ① to ②.

Note that back-pressure on ③ adds to the spring setting value.

在稳定状态，①口与②口不通，③口与弹簧腔相通；在①口达到预设值时，①口到②口通。

注：③口的背压按 1 : 1 地叠加到阀的设定上。

符号 SYMBOL



技术参数 SPECIFICATIONS

工作压力 (Operating Pressure): 350 bar on port①and②; 240 bar on port③

最大流量 (Flow Max): 56.8l/min.

内泄漏 (Internal Leakage): 82 cc/min. max. to 85% of nominal setting

弹簧调压范围 (Standard Spring Ranges): 20 to 345 bar; preset预设: 172bar

温度 (Temperature): -40° F to +250° F (-40° C to +120° C)

油液 (Fluids): Mineral-based fluids with viscosities of 7.4 to 420 cSt. (矿物油粘度)

插孔 (Cavity): VC10-3

阀块材料 (Body Material):

Steel & Ductile iron rated to 350bar 钢和球铁允许使用最大压力350bar

