

# KPR50L-36A-0-N-10

先导式减压阀

## 说明 DESCRIPTION

A cartridge-style pilot-operated pressure reducing/relieving valve  
 先导式减压 / 溢流阀

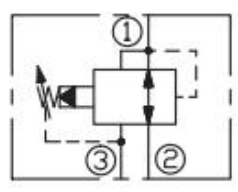
## 工作 OPERATION

In its steady state, the valve allows flow to pass bi-directionally from ② to ①, with the spring chamber constantly drained at ③. On attainment of a pre-determined pressure at ①, the cartridge shifts to restrict input flow at ②, thereby regulating pressure at ①.

In this mode, the valve will also relieve ① to ③. Dead band (from reducing to relieving) pressure rise over reduced pressure setting:  
 Non-flow condition: approximately 0.55 bar (8 psi); with flow: approximately 2.1bar (30psi).

在①口的压力达到弹簧设定的压力时，从②到①减压。弹簧腔内排到③口。  
 当①口的压力超过预设定的压力时，②口渐渐关闭，①到③开始溢流。  
 由减压转至溢流超设定压力的死区：无流动状态约 0.55bar，流动状态约 2.1bar。

## 符号 SYMBOL



## 技术参数 SPECIFICATIONS

工作压力(Operating Pressure):	207bar
弹簧调压范围(Standard Spring Ranges):	6.9 to 27.6 bar, preset 预设定:13.8bar 10.3 to 103 bar, preset 预设定: 56bar 27.6 to 207 bar, preset 预设定: 103bar
最大流量 (Flow Max):	56l/min.
温度(Temperature):	-40° F to +250° F(-40° C to +120° C)
插孔(Cavity):	VC10-3
油液(Fluids):	Mineral-based fluids with viscosities of 7.4 to 420 cSt. (矿物油粘度)
阀块材料(Body Material):	6061-T6 aluminum alloy rated to 207bar, Steel & Ductile iron rated to 350bar 6061-T6铝, 允许使用最大压力207bar 钢和球铁允许使用最大压力350bar

