

K1DR2P20S

溢流阀

说明 DESCRIPTION

A cartridge-style direct-acting poppet-type pilot-capacity relief valve

直动座阀式先导阀

工作 OPERATION

Direct-acting, relief cartridges are used to remotely control the pressure setting of other pilot-operated valves.

Because capacity is limited to pilot flow, these valves should be used with other higher

flow valves; Back pressure on the tank port ② is directly additive to the valve setting at

a 1:1 ratio.

直动式先导溢流阀用于远程控制其他先导式主阀的压力设定控制。由于额定流量的限制，此阀应在匹配的先导流量下与其他主阀一起使用；②口背压会按 1:1 叠加到阀的设定压力上。

技术参数 SPECIFICATIONS

最大工作压力 (Max. Operating Pressure): 350bar

流量 (Flow): 1.5L/min

内泄漏 (Internal Leakage): 2 drops/min (滴/分)

响应时间 (Response Time): 2 ms

弹簧调压范围 (Standard Spring Ranges):

A: 25psi (1.7 bar) to 3000psi (210 bar), preset 预设定: 1000psi (70 bar)

B: 25psi (1.7 bar) to 1500psi (105 bar), preset 预设定: 1000psi (70 bar)

C: 25psi (1.7 bar) to 6000psi (420 bar), preset 预设定: 1000psi (70 bar)

D: 25psi (1.7 bar) to 800psi (55 bar), preset 预设定: 400psi (28 bar)

E: 25psi (1.7 bar) to 400psi (28 bar), preset 预设定: 200psi (14 bar)

W: 25psi (1.7 bar) to 4500psi (315 bar), preset 预设定: 1000psi (70 bar)

温度 (Temperature): -40° F to +250° F (-40° C to +120° C)

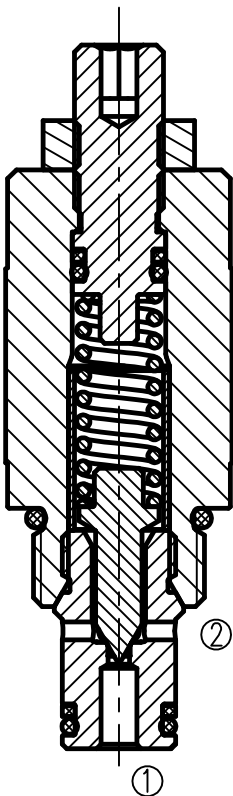
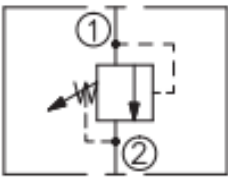
油液 (Fluids): Mineral-based fluids with viscosities of 7.4 to 420 cSt. (矿物油粘度)

插孔 (Cavity): VC08-2

阀块材料 (Body Material):

Steel & Ductile iron rated to 350bar 钢和球铁允许使用最大压力350bar

符号 SYMBOL



压力-流量曲线 PRESSURE DROP VS. FLOW

32cSt oil @ 40°C

