

# KDRD-LCN

直动式溢流阀

## 说明 DESCRIPTION

A cartridge-style direct-acting relief valve

直动式溢流阀

## 工作 OPERATION

The valve is normally closed, pressure-limiting valves used to protect hydraulic components from pressure transients. When the pressure at the inlet (port ①) reaches the valve setting, the valve starts to open to tank (port ②), throttling flow to limit the

pressure rise. These valves are smooth and quiet, essentially zero leak, dirt tolerant immune to silting and are very fast.

此阀为常闭压力限制阀，常用来保护液压元件，以防止其受瞬态压力的冲击。当压力在进口（油口①）达到阀的设定值，阀开始向油箱（油口②）溢流，节流以限制压力上升。此类阀调节平稳、噪声小，基本为零泄漏，抗油污能力强，防堵塞并且响应速度快。

## 技术参数 SPECIFICATIONS

工作压力 (Operating Pressure): 350bar

流量 (Capacity): See PRESSURE DROP VS. FLOW graph.

回座时最大泄漏 (Maximum valve leakage at reseal): 10 drops/min(滴/分)

闭合压力 (Reseat Pressure): >80% of setting pressure(设定压力)

弹簧调压范围 (Standard Spring Ranges):

- A 35-210 bar; preset 预设定: 70 bar
- W 55-315 bar; preset 预设定: 70 bar
- B 20-105 bar; preset 预设定: 70 bar
- C 70-420 bar; preset 预设定: 70 bar
- D 14- 55 bar; preset 预设定: 28 bar
- S 3.5-14 bar; preset 预设定: 7 bar

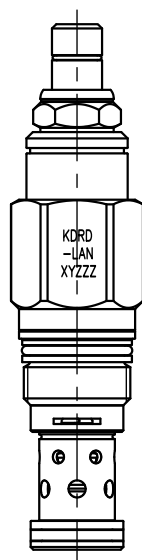
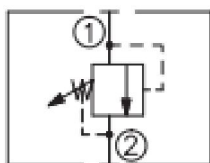
温度 (Temperature): -40° F to +250° F (-40° C to +120° C)

过滤 (Filtration): See page (参见) N-1

油液 (Fluids): Mineral-based fluids with viscosities of 7.4 to 420 cSt. (矿物油粘度)

插孔 (Cavity): SUN T-10A

## 符号 SYMBOL



## 压力-流量曲线 PRESSURE DROP VS. FLOW

