

KACR-M18

直动式补油溢流阀

说明 DESCRIPTION

A cartridge-style direct-acting poppet-type anti-cavitation relief valve

直动座阀式补油溢流阀

工作 OPERATION

Flow is free from ① to ② until pressure increases to meet the selected valve setting, allowing relief flow through port ① to tank. This valve combines the typical function of shock relief valve

(direct acting) and anticavitation function through the check valve. The direct action and the specific design allow a very fast opening and closing.

Note: to obtain a good leak proof performance coin the cavity seat using a loose valve seat as a coning tool.

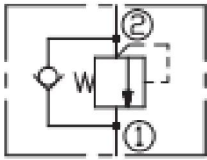
Torque to be applied : 4.5 ± 2 Nm.

液体从①口到②口自由流动，直到压力上升到符合所选阀的设置压力，允许通过①口溢流到油箱。结合溢流阀（直动）的典型功能和单向阀的补油功能。直动式和特殊设计使阀芯快速打开和关闭。

注意：为了得到良好的防泄漏性能，使阀座结合活动阀芯作为一个密封副。要运用扭矩： 4.5 ± 2 Nm 调节，定值设置。

技术参数 SPECIFICATIONS

符号 SYMBOL



最大工作压力 (Max. Operating pressure): 380bar

弹簧调压范围 (Standard Spring Ranges):
 10 to 70 bar;
 70 to 120bar;
 120 to 200bar;
 200 to 270 bar;
 270 to 320 bar;
 320 to 380 bar;

最大流量 (Max. Flow): 60 I/min.

温度 (Temperature): -40° F to $+250^{\circ}$ F (-40° C to $+120^{\circ}$ C)

过滤 (Filtration): See page (参见) N-1

油液 (Fluids): Mineral-based fluids with viscosities of 7.4 to 420 cSt. (矿物油粘度)

插孔 (Cavity): 特殊孔-730

