

# KACR-M24

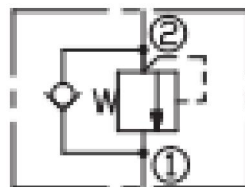
直动式补油溢流阀

## 说明 DESCRIPTION

A cartridge-style direct-acting poppet-type anti-cavitation relief valve

直动座阀式补油溢流阀

## 符号 SYMBOL



## 工作 OPERATION

Flow is free from ① to ② until pressure increases to meet the selected valve setting, allowing relief flow through port ① to tank. This valve combines the typical function of shock relief valve

(direct acting) and anticavitation function through the check valve. The direct action and the specific design allow a very fast opening and closing.

Note: to obtain a good leak proof performances coin the cavity seat using a loose coning tool.

Torque to be applied : $6.5 \pm 2$  Nm.

液体从①口到②口自由流动，直到压力上升到符合所选阀的设置压力，允许通过①口溢流到油箱。

结合溢流阀（直动）的典型功能和单向阀的补油功能。直动式和特殊设计使阀芯快速打开和关闭。

注意：为了得到良好的防泄漏性能，使阀座结合活动阀芯作为一个密封副。要运用扭矩： $6.5 \pm 2$ Nm 调节，定值设置。

## 技术参数 SPECIFICATIONS

最大工作压力 (Max. Operating Pressure):	400bar
弹簧调压范围 (Standard Spring Ranges):	90 to 140 bar; 140 to 270bar; 270 to 350bar; 350 to 400bar;
最大流量 (Max. Flow):	90 I/min.
温度 (Temperature):	-40° F to +250° F (-40° C to +120° C)
过滤 (Filtration):	See page (参见) N-1
油液 (Fluids):	Mineral-based fluids with viscosities of 7.4 to 420 cSt. (矿物油粘度)
插孔 (Cavity):	特殊孔-870

