

# KACR-M14

直动式补油溢流阀

## 说明 DESCRIPTION

A cartridge-style direct-acting poppet-type anti-cavitation relief valve

直动座阀式补油溢流阀

## 工作 OPERATION

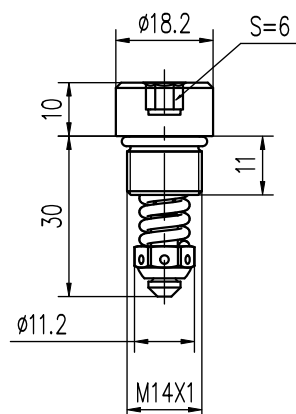
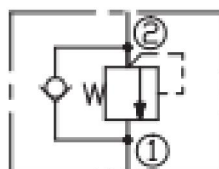
Flow is free from ① to ② .until ② pressure increases to meet the selected valve setting, allowing relief flow through port ① to tank. This valve combines the typical function of shock relief valve (direct acting) and anti-cavitation function through the check valve. The direct action and the specific design allow a very fast opening and closing.

液体从①口到②口自由流动 . 直到②口压力上升到符合所选阀的设置压力, 允许通过①口溢流到油箱。结合溢流阀(直动)的典型功能和单向阀的补油功能。直动式和特殊设计使阀芯快速打开和关闭。

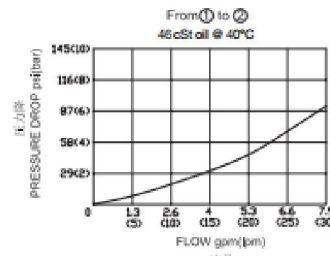
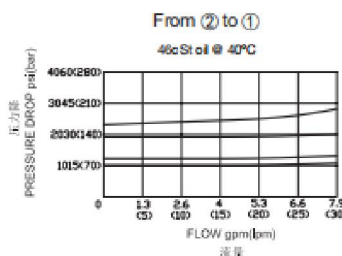
## 技术参数 SPECIFICATIONS

工作压力(Operating Pressure):	210bar
流量(Flow):	See PRESSURE DROP VS. FLOW graph.
回座时最大泄漏(Maximum valve leakage at reseal):	15 drops/min(滴/分)
弹簧调压范围(Standard Spring Ranges):	20-70bar; 70-100bar; 100-210bar;
温度(Temperature):	-40° F to +250° F(-40° C to +120° C)
过滤(Filtration):	See page (参见) N-1
油液(Fluids):	Mineral-based fluids with viscosities of 7.4 to 420 cSt. (矿物油粘度)
插孔(Cavity):	特殊孔-869

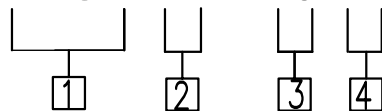
## 符号 SYMBOL



订货代号 TO ORDER



## KACR-M14-20- x



① 功能  
KACR= 补油溢流阀  
Anti-Cavitation Relief Valve

② 规格 Size  
M14=M14 规格

③ 弹簧调压范围 Spring Ranges  
05=290 -1000psi ( 20-70 bar)  
10=1000-1450psi ( 70-100bar)  
20=1450-3000psi (100-210bar)

④ 设定压力 Setting In Bar  
空白 Blank= 预设设定 Preset  
例 Example:070=70bar  
固定设置值 psi(bar) Q=5 L/min