

# KSF16-22

二位二通电磁阀 (常闭)

## 说明 DESCRIPTION

A cartridge-style 2-position  
2-way Threaded cartridge  
directional valve  
二位, 二通, 螺纹插装 方向阀

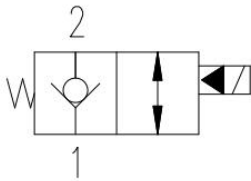
## 工作 OPERATION

power, KSF16-22 as a one-way valve, allowing oil flow from 1 to 2 flow while cutting off oil from 2 to 1 after the power is turned on, the spool of the plug is lifted so that the flow direction is turned on.

断电时, KSF16-22 用作单向阀, 允许油液从 ① 流向 ②, 同时截止油液从 ② 流向 ①。

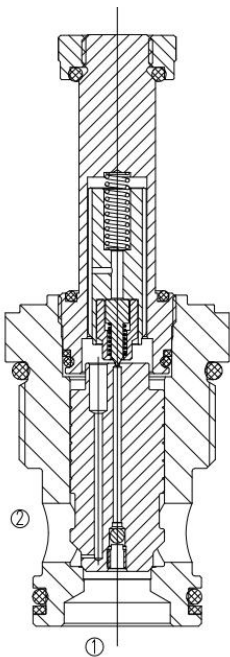
通电后, 插件的阀芯提升, 从而接通 ② 流向 ① 此模式允许双向流动。

## 符号 SYMBOL

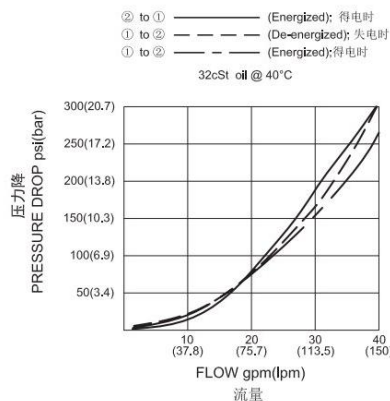


## 技术参数 SPECIFICATIONS

工作压力 (Operating pressure):	350bar
流量 (Flow):	See PRESSURE DROP VS. FLOW graph
内泄漏 (Internal Leakage):	5 滴/min. max. at 350 bar
温度 (Temperature):	-40° C to + 100° C
过滤 (Filtration):	参考过滤要求 (Reference filter requirements)
油液 (Fluids):	Mineral-based fluids with viscosities of 7.4 to 420 cSt. (矿物油粘度)
插孔 (Cavity):	VC16-2

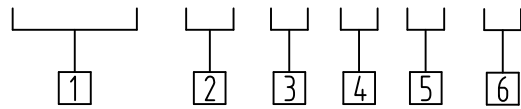


## 压力-流量曲线 PRESSURE DROP VS. FLOW



订货代号 TO ORDER

KSF16-22-0-N-\*\*-\*\*



1 公司代码  
Company code

2 功能  
22= 二位三通  
Piloted 2-way

3 0  
0= 只订插件  
0=Order plug-ins only

4 密封件 Sealing ring  
N 丁氟橡胶 (标准型)  
BUNA N (Std.)

V 氟橡胶 Fluorocarbom

5 12DC =12  
24DC =24

6 coli DIN 43650 =DG  
coli DT 04-2P =ER  
两根导线 =DL

安装尺寸 INSTALLATION DIMENSIONS

