

# KRVQ-S10

直动式溢流阀

## 说明 DESCRIPTION

A screw-in, cartridge style, direct acting normally closed hydraulic relief valve.

旋入式、套筒式、直动式、常闭液压安全阀

## 工作 OPERATION

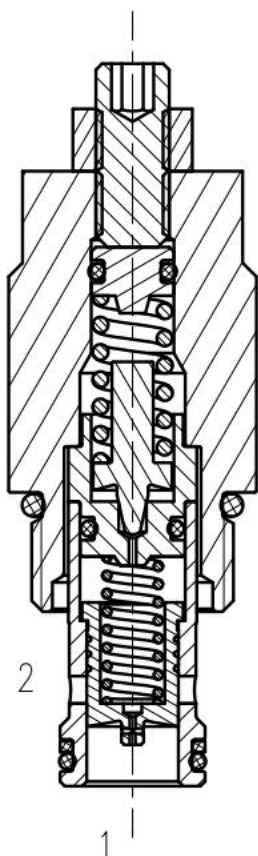
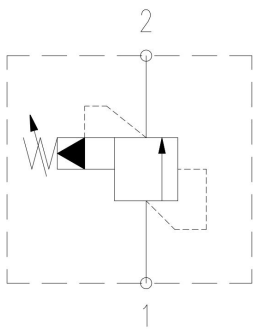
When the pressure at the inlet ① reaches the valve setting, the pilot poppet starts to open from its seat and determines the shifting of the main stage poppet (spool type) that throttles oil flow to tank ②.

当油口①的压力达到阀门设定值时，先导提升阀开始从阀座开启，并确定主级阀芯（阀芯式）的移动，以节流到阀门②

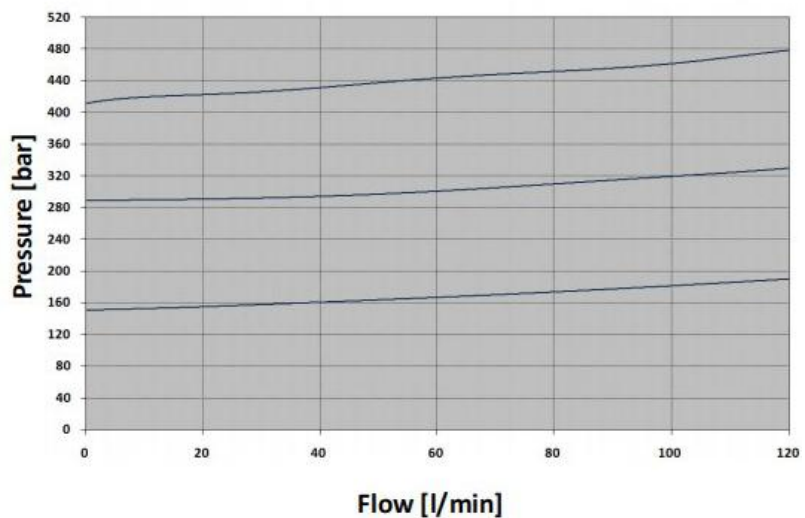
## 技术参数 SPECIFICATIONS

工作压力 (Operating pressure):	350bar
流量 (Flow):	120L/min
内泄漏 (Internal Leakage):	100 cc/min to 90% of nominal set point
温度 (Temperature):	-20° C to +90° C
过滤 (Filtration):	参考过滤要求 (Reference filter requirements)
油液 (Fluids):	Mineral-based fluids with viscosities of 7.4 to 420 cSt. (矿物油粘度)
插孔 (Cavity):	VC10-2

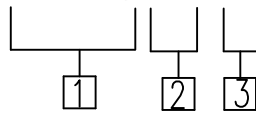
## 符号 SYMBOL



## 压力-流量曲线 PRESSURE DROP VS. FLOW



KRVQ-\*\*-\*



1 公司代号  
Company code

2 空腔 Cavity  
S10 = 7/8-14 UNF with  $\varnothing 15,86$  nose size

3 弹簧范围 Spring Ranges  
Y =20-280bar  
N =141-280bar  
B =281-420bar

安装尺寸 INSTALLATION DIMENSIONS

