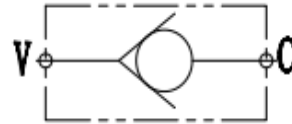


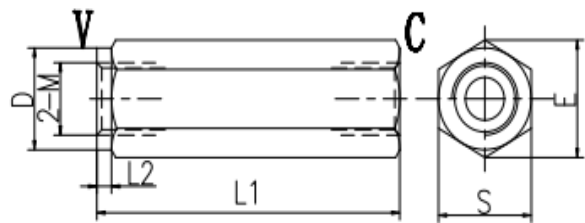
图形符号/SYMBOL:



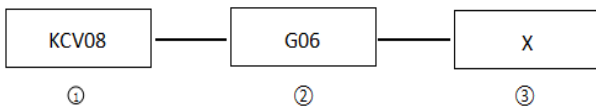
技术参数/TECHNICAL DATA:

应用材料/MATERIAL 适用工作环境/OPERATIONAL
 阀体/BODY: 钢 安装/MOUNTING
 阀芯/VALVES: 硬质钢/Hardened
 温度/TEMPERATURES 按需/as preferred
 理想工作温度: +40°C~+70°C
 Ideal operating range between +40°C and +70°C
 最低/最高环境温度: -20°C~+60°C
 Min/Max environment temps -20°C~and
 最高工作温度: 90°C/Max operating

外形尺寸/OVER DIMENSION:



型号说明/MODEL CODE:



- ①单向阀系列代号/check valve series code :KCV08型/KCV08 type
- ②连接螺纹尺寸/connect thread
- ③开启压力/opening pressure

应用

压力作用下使得流体从V流向C，而液体从C向V流动时则被反向密封，油液无法通过。/Under pressure the fluid flow from V to C, and the flow from C to V are blocked in the reverse

型号 /TYPE	DN (mm)	最大流量 (L/min)	PN (bar)	L1	L2	E	S	D
KCV08-G06-0.5	8	30	350	58	3	26.5	24	24
KCV08-G04-0.5	6	24	350	58	3	21.5	19	19
KCV08-G04-0.5-L	8	30	315	62	3	21.5	19	19
KCV08-G06-0.5-L	8	36	315	68	3	26.5	24	24
KCV08-G12-0.5-L	16	110	350	88	3	39.5	36	36
KCV08-M22-2	10	55	315	72	2	34.5	30	30
KCV08-M42-0.5	25	350	315	120	2	68	60	60
KCV15-G34-5	14	120	250	85	2	39.5	36	36
KCV08-M27-0.5	15	150	315	85	2	39.5	36	36
KCV08-G12-0.5	14	150	315	85	2	39.5	36	36
KCV08-G08-0.5	10	55	315	72	2	34.5	30	30

注: M处连接螺纹可以根据客户要求来设计
 Note: M can be designed according to the customer's requirements