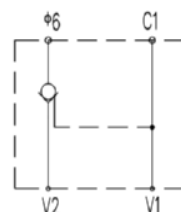


型号/TYPE	A	B	C	D	E	F	G	H	I	J	M	N	O	P
KVRSL-G1/4-FL	80	29	35	14	10	35	64	10	35	64	∅6.5	∅6	30	60
KVRSL-G3/8-FL	80	29	35	14	10	35	64	10	35	64	∅6.5	∅6	30	60
KVRSL-G1/2-FL	100	38	38	19	15	40	76	15	40	76	∅8.5	∅9	35	70
KVRSL-G3/4-FL	140	47	68	25	22	48	115	20	48	115	∅10.5	∅14	44	90

符号/SYMBOL:



技术参数/TECHNICAL DATA:

应用材料/MATERIAL EMPLOYED

阀体/BODY: 钢/STEEL

阀芯/VALVES: 钢/STEEL

密封/SEALS: 丁腈胶/NBR

温度/TEMPERATURES

理想工作温度: +40°C~+70°C

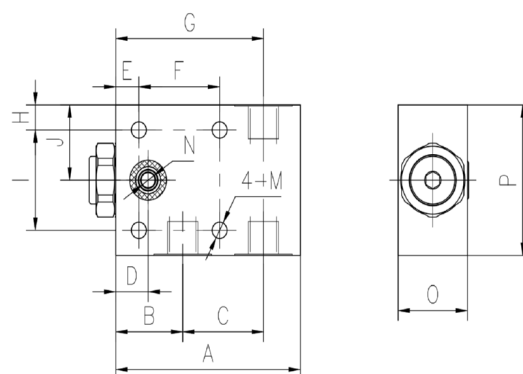
Ideal operating range between +40°C and

最低/最高环境温度: -20°C~+60°C

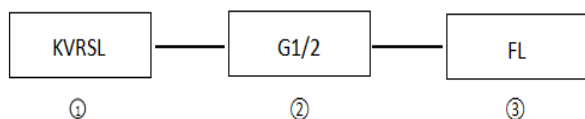
Min/Max environment temps -20°C~and

最高工作温度: 90°C/Max operating

外形尺寸/OVER



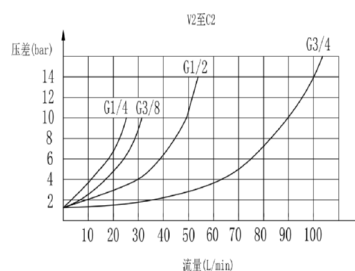
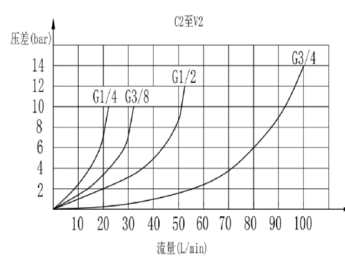
型号说明/MODEL CODE:



①单向液压锁系列代号/single pilot check valve series code :KDPC型/KDPC type

②阀体连接螺纹形式/connect thread dimension:BBSP

流量曲线图/FLOW DIAGRAM:



型号/TYPE	最大压力 (bar)		最大流量 (L/min)	先导比 (pilot ratio)	开启压力 (cracking pressure) (bar)
	钢/steel	铝/aluminum			
KVRSL-G1/4-FL	350	200	20	7.1: 1	3.5
KVRSL-G3/8-FL			30	7.1: 1	
KVRSL-G1/2-FL			50	4.8: 1	
KVRSL-G3/4-FL			100	5.4: 1	