

型号/TYPE	C1-C2 V1-V2	A	B	C	D	E	F	G	H	I	J	O-ring
KSPC-G1/4-FL	G1/4	115	90	32	40	64	Ø6.5	35	62	34	Ø6	10.77X2.62
KSPC-G3/8-FL	G3/8	115	90	32	40	64	Ø6.5	35	62	34	Ø6	10.77X2.62
KSPC-G1/2-FL	G1/2	129	114	38	40	70	Ø8.5	40	76	35	Ø10	15.54X2.62
KSPC-G3/4-FL	G3/4	166	140	46	51	83	Ø10.5	48	96	44	Ø14	18.74X2.62

技术参数/TECHNICAL DATA:

应用材料/MATERIAL EMPLOYED

阀体/BODY: 钢/STEEL

阀芯/VALVES: 钢/STEEL

密封/SEALS: 丁腈胶/NBR

温度/TEMPERATURES

理想工作温度: +40°C~+70°C

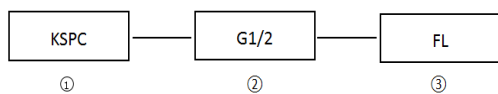
Ideal operating range between +40°C and +70°C

最低/最高环境温度: -20°C~+60°C

Min/Max environment temps -20°C~and

最高工作温度: 90°C/Max operating temperature 90°C

型号说明/MODEL CODE:



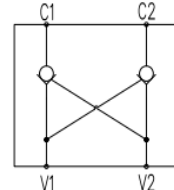
① 双向液压锁系列代号/double pilot check valve

② 阀体连接螺纹形式/connect thread dimension: BBSP

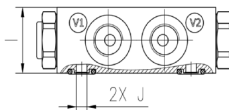
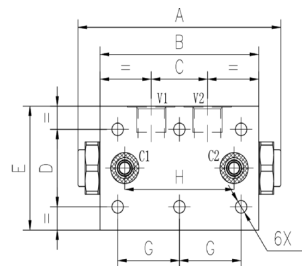
③ 法兰连接 (板式连接) /Flangeable: FL

型号/TYPE	最大压力 (bar)		最大流量 (L/min)	先导比 (pilot ratio)	开启压力 (cracking pressure) (bar)
	钢/steel	铝/aluminum			
KSPC-G1/4-FL	350	200	20	7.1: 1	3.5
KSPC-G3/8-FL			30	7.1: 1	
KSPC-G1/2-FL			50	4.8: 1	
KSPC-G3/4-FL			100	5.4: 1	

符号/SYMBOL:



外形尺寸/OVER DIMENSION:



流量曲线图/FLOW DIAGRAM:

