

型号/TYPE	C1-C2 V1-V2	A	B	C	D	E	F	G	H
KDPC-G1/4	G1/4	101	90	58	42	40	64	30	∅6.5
KDPC-G3/8	G3/8	101	90	58	42	40	46	30	∅6.5
KDPC-G1/2	G1/2	121	114	71	52	40	70	35	∅8.5
KDPC-G3/4	G3/4	154	140	90	46	50	90	44	∅10.5

技术参数/TECHNICAL DATA:

应用材料/MATERIAL EMPLOYED

阀体/BODY: 钢/STEEL

阀芯/VALVES: 钢/STEEL

密封/SEALS: 丁腈胶/NBR

温度/TEMPERATURES

理想工作温度: +40°C~+70°C

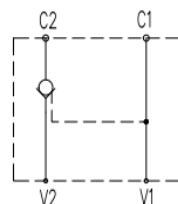
Ideal operating range between +40°C and +70°C

最低/最高环境温度: -20°C~+60°C

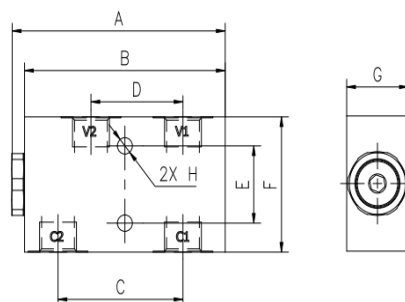
Min/Max environment temps -20°C~and

最高工作温度: 90°C/Max operating temperature 90°C

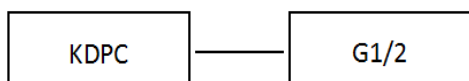
符号/SYMBOL:



外形尺寸/OVER DIMENSION:



型号说明/MODEL CODE:



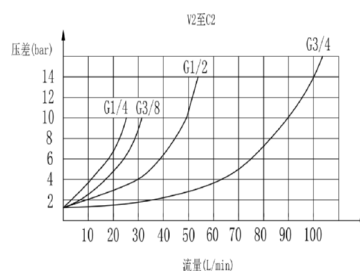
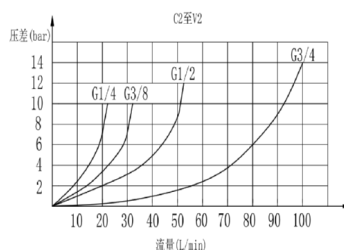
①

②

① 单向液压锁系列代号/single pilot check valve series code :KDPC型/KDPC type

② 阀体连接螺纹形式/connect thread dimension:BBSP

流量曲线图/FLOW DIAGRAM:



型号/TYPE	最大压力 (bar)		最大流量 (L/min)	先导比 (pilot ratio)	开启压力 (cracking pressure) (bar)
	钢/steel	铝/aluminum			
KDPC-G1/4	350	200	20	7.1:1	3.5
KDPC-G3/8			30	7.1:1	
KDPC-G1/2			50	4.8:1	
KDPC-G3/4			100	5.4:1	