

K1CE30F

K1CE系列平衡阀

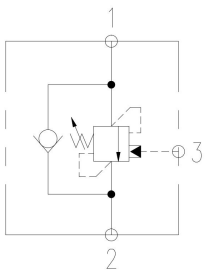
说明 DESCRIPTION

Pilot auxiliary overflow with check valve
先导辅助溢流，带单向阀

工作 OPERATION

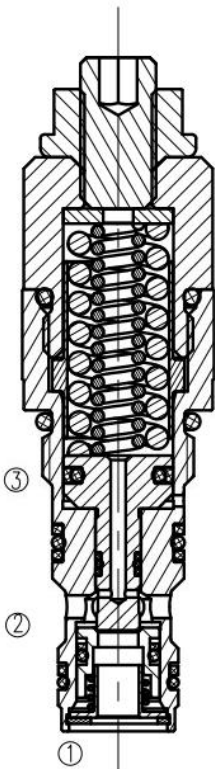
The one-way valve part allows pressure oil to flow freely into the oil cylinder, while preventing the reverse flow of oil. After the pilot pressure is established, the overflow part can control the movement of the actuator. The overflow pressure is usually set higher than 1.3 times the maximum negative line pressure, but the opening of the valve is determined by the pilot ratio. For the application of optimized load control and different power, different pilot ratios can be selected. 单向阀部分允许压力油自由流入油缸，同时阻止油的反向流动。溢流部分在先导压力建立后，可控制执行机构的运动。溢流压力设置通常高于1.3倍最大负载压力，但阀的开启由先导比决定。对于优化负载控制及不同功率的应用，可选择不同的先导比例。

符号 SYMBOL

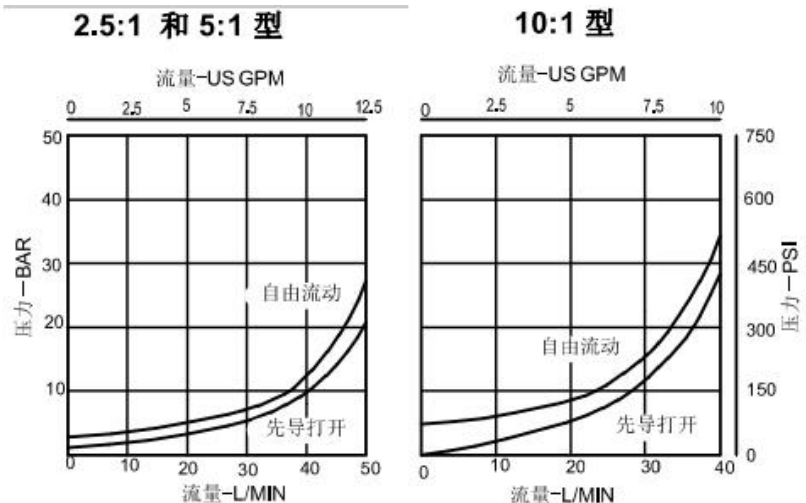


技术参数 SPECIFICATIONS

工作压力 (Operating pressure):	350bar
流量 (Flow):	30L/min
内泄漏 (Internal Leakage):	5 drops/min. (滴/分) max. at 350bar
单向阀开启压力 (Check valve opening pressure):	0.3bar
先导比 (Leader ratio):	5:1
温度 (Temperature):	-20° C to + 90° C
过滤 (Filtration):	参考过滤要求 (Reference filter requirements)
油液 (Fluids):	Mineral-based fluids with viscosities of 7.4 to 420 cSt. (矿物油粘度)
插孔 (Cavity):	A6610

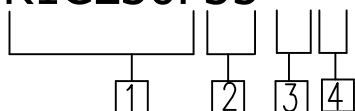


压力-流量曲线 PRESSURE DROP VS. FLOW



订货代号 TO ORDER

K1CE30F35 * *



- | | |
|---|---|
| <p>① 公司代号
Company code</p> <hr/> <p>② 压力范围 Pressure range
20=(2.5:1 or 5:1) 70-210bar
 (10:1) 100-210bar
35=(2.5:1 or 5:1) 100-350bar
 (10:1) 120-350bar</p> <hr/> <p>③ 密封件 Sealing ring
S 丁腈橡胶 (标准型) BUNA N (Std.)
SV 氟橡胶 Fluorocarbom</p> | <p>④ 先导比率 Leading ratio
2=2.5: 1
5=5: 1</p> |
|---|---|

安装尺寸 INSTALLATION DIMENSIONS

