

KCKCB

液控单向阀 (标准导压)

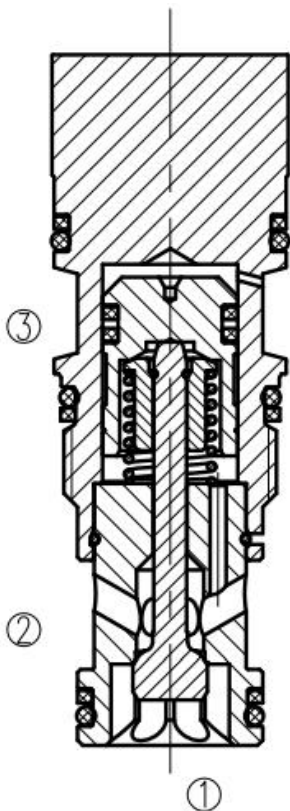
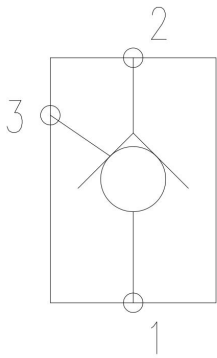
说明 DESCRIPTION

A cartridge-style Pilot to open, poppet-type check valve
锥阀式液控单向阀

工作 OPERATION

The valve has a non-sealed pilot. It allows free flow from port ② to port ① and blocks flow from port ① to port ②. Flow will be allowed from port ① to port ② when sufficient pressure is applied at pilot ③. This pilot operated check valve has a 3:1 pilot ratio, meaning that at least one-third of the load pressure held at ① is required at pilot ③ to open the valve. Pressure at port ② directly opposes pilot pressure. 此阀具有非密封导压。当在②口的压力超过开启压力，②到①开启；在反方向，①到②关闭；当在③口所需的液压力达到①口负载的 1/3 时，阀芯打开，①和②通，液控比为 3:1；②口压力将直接抵抗先导压力。

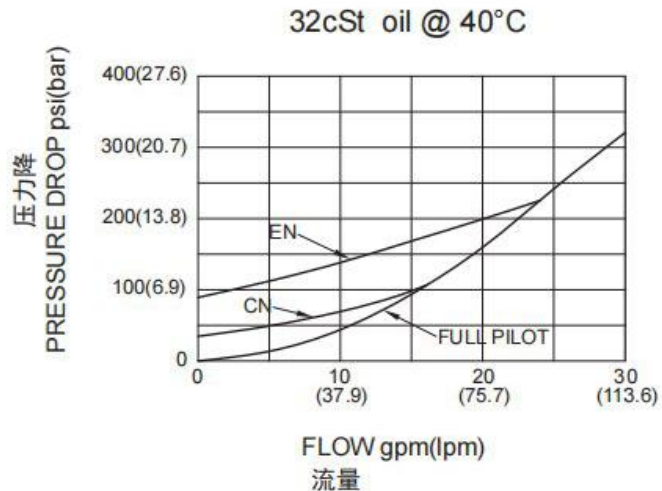
符号 SYMBOL



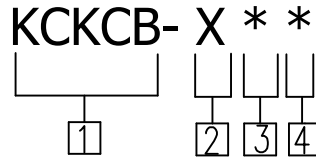
技术参数 SPECIFICATIONS

工作压力 (Operating pressure):	350bar
流量 (Flow):	60L/min
内泄漏 (Internal Leakage):	1 drops/min. (滴/分) max. at 350bar
先导比 (Leader ratio):	3:1
温度 (Temperature):	-40° C to + 120° C
过滤 (Filtration):	参考过滤要求 (Reference filter requirements)
油液 (Fluids):	Mineral-based fluids with viscosities of 7.4 to 420 cSt. (矿物油粘度)
插孔 (Cavity):	T-11A

压力-流量曲线 PRESSURE DROP VS. FLOW



订货代号 TO ORDER



1 公司代号
Company code

4 密封件 Sealing ring
N 丁腈橡胶 (标准型)
BUNA N (Std.)

2 控制方式 Control
X= 常规 Standard Pilot

V 氟橡胶 Fluorocarbom

3 开启压力 Cracking Pressure
C=2bar(30psi)
A=0.3bar(4psi)
B=1bar(15psi)
D=3.5bar(50psi)
E=5bar(75psi)
F=7bar(100psi)

安装尺寸 INSTALLATION DIMENSIONS

