

# KRV08-22A

差动式溢流阀

## 说明 DESCRIPTION

Threaded cartridge, direct acting, differential relief valves

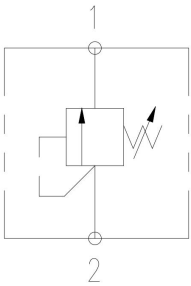
螺纹插装, 直动型, 差动型溢流阀

## 工作 OPERATION

The valve blocks flow from ② to ① until sufficient pressure is present at ② to force the poppet from its seat.

当②口压力达到设定压力时, 从②口到①口打开, 以保持系统压力不超过设定值。

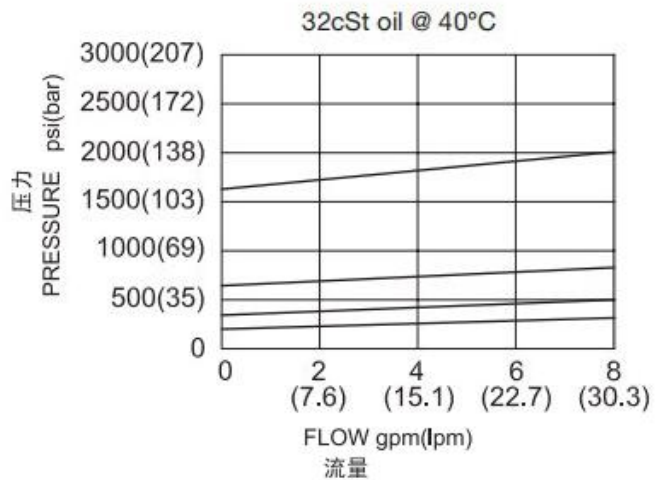
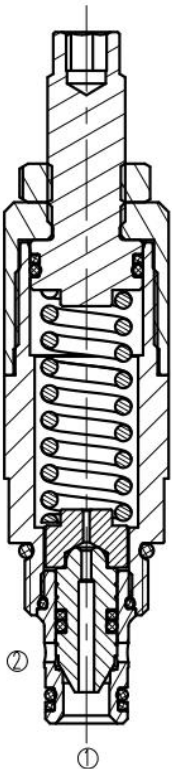
## 符号 SYMBOL



## 技术参数 SPECIFICATIONS

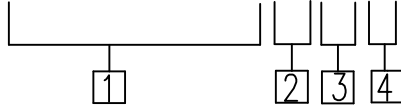
工作压力(Operating pressure):	221bar
流量(Flow):	30L/min
内泄漏(Internal Leakage):	5 drops/min(滴/分). max. to 80% of nominal setting
单向阀开启压力(Check valve opening pressure):	crack pressure at 0.95 lpm /0.25 gpm
温度(Temperature):	-20° C to +90° C
过滤(Filtration):	参考过滤要求 (Reference filter requirements)
油液(Fluids):	Mineral-based fluids with viscosities of 7.4 to 420 cSt. (矿物油粘度)
插孔(Cavity):	VC08-2

## 压力-流量曲线 PRESSURE DROP VS. FLOW



订货代号 TO ORDER

KRV08-22A-\*-\*-\*



1 公司代号  
Company code

2 0  
0= 只订插件  
0=Order plug-ins only

3 密封件 Sealing ring  
N 丁腈橡胶 (标准型)  
BUNA N (Std.)  
V 氟橡胶 Fluorocarbom

4 弹簧调压范围 (Standard Spring Ranges):  
4=50-400psi (3.45-27.59bar)  
7=100-700psi (6.9-48.3bar)  
13=150-1300psi (10.3-89.6bar)  
26=250-3600psi (17.24-248.2bar)

安装尺寸 INSTALLATION DIMENSIONS

