

KRV08-20A

直动式溢流阀

说明 DESCRIPTION

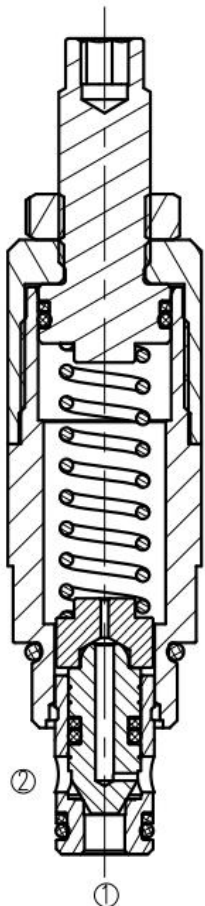
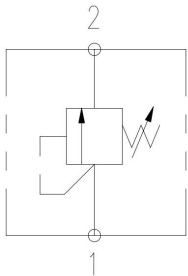
Threaded cartridge, direct acting,
Seat valve relief valve
螺纹插装, 直动型, 座阀式溢流阀

工作 OPERATION

The valve prevents flow from ① to ② until the set crack pressure at ① is achieved. The poppet then unseats allowing flow from ① to ② protecting the circuit from over pressurization.

当在①口的压力超过调压弹簧设定的压力时, 阀芯打开, ①到②通, 防止系统过压。

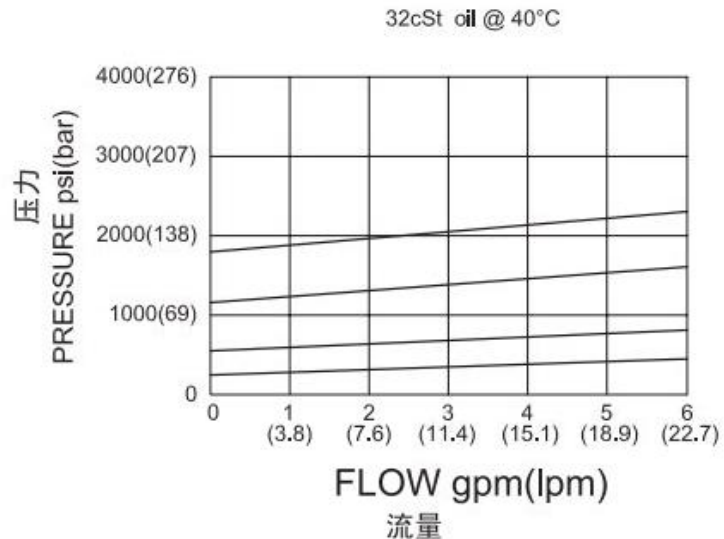
符号 SYMBOL



技术参数 SPECIFICATIONS

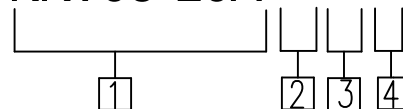
工作压力(Operating pressure):	248bar
流量(Flow):	23L/min
内泄漏(Internal Leakage):	5 drops/min(滴/分). max. to 80% of nominal setting
单向阀开启压力(Check valve opening pressure):	crack pressure at 0.95 lpm /0.25 gpm
温度(Temperature):	-20° C to +90° C
过滤(Filtration):	参考过滤要求 (Reference filter requirements)
油液(Fluids):	Mineral-based fluids with viscosities of 7.4 to 420 cSt. (矿物油粘度)
插孔(Cavity):	VC08-2

压力-流量曲线 PRESSURE DROP VS. FLOW



订货代号 TO ORDER

KRV08-20A-*-*-*



1 公司代号
Company code

2 0
0= 只订插件
0=Order plug-ins only

3 密封件 Sealing ring
N 丁腈橡胶 (标准型)
BUNA N (Std.)
V 氟橡胶 Fluorocarbom

4 弹簧调压范围 (Standard Spring Ranges):
5=50-500psi (3.4-34.4bar)
9=100-110psi (6.9-75.8bar)
18=250-2300psi (17.2-158.5bar)
33=250-3600psi (17.24-248.2bar)

安装尺寸 INSTALLATION DIMENSIONS

