

KRV10-20A

直动式溢流阀

说明 DESCRIPTION

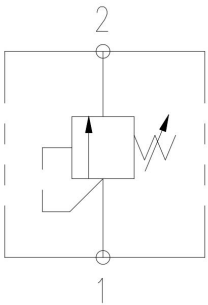
Threaded cartridge, direct acting,
Seat valve relief valve
螺纹插装，直动型，座阀式溢流阀

工作 OPERATION

The valve prevents flow from ① to ② until the set crack pressure at ① is achieved. The poppet then unseats allowing flow from ① to ② protecting the circuit from over pressurization.

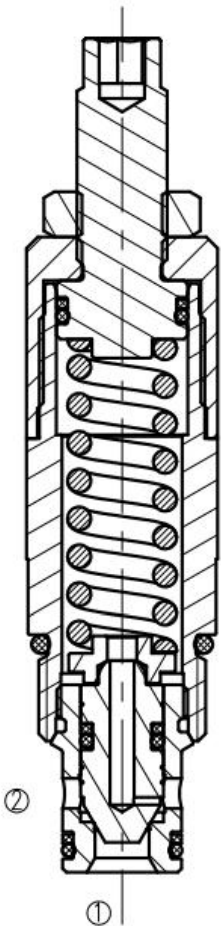
当在①口的压力超过调压弹簧设定的压力时，阀芯打开，①到②通，防止系统过压。

符号 SYMBOL

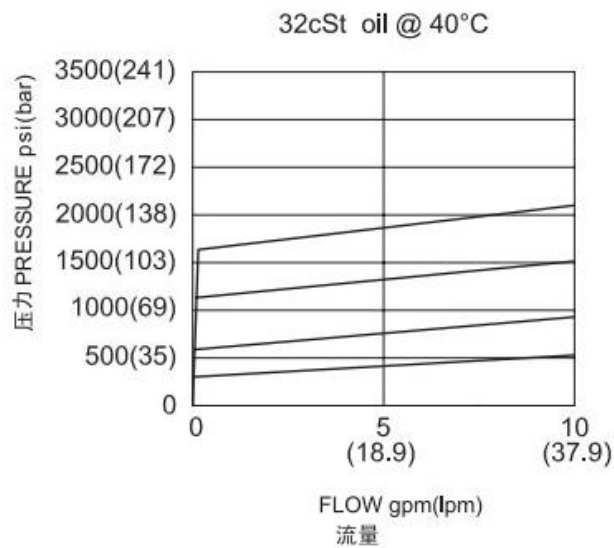


技术参数 SPECIFICATIONS

工作压力(Operating pressure):	228bar
流量(Flow):	38L/min
内泄漏(Internal Leakage):	5 drops/min(滴/分). max. to 80% of nominal setting
单向阀开启压力(Check valve opening pressure):	crack pressure at 0.95 lpm /0.25 gpm
温度(Temperature):	-20° C to +90° C
过滤(Filtration):	参考过滤要求 (Reference filter requirements)
油液(Fluids):	Mineral-based fluids with viscosities of 7.4 to 420 cSt. (矿物油粘度)
插孔(Cavity):	VC10-2

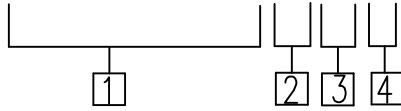


压力-流量曲线 PRESSURE DROP VS. FLOW



订货代号 TO ORDER

KRV10-20A-*-*-*



1 公司代号
Company code

2 0
0= 只订插件
0=Order plug-ins only

3 密封件 Sealing ring
N 丁腈橡胶 (标准型)
BUNA N (Std.)
V 氟橡胶 Fluorocarbom

4 弹簧调压范围 (Standard Spring Ranges):
6=150-600psi (10.34-41.38bar)
13=150-1300psi (10.34-89.66bar)
23=250-2300psi (17.24-158.62bar)
33=250-3300psi (17.24-227.59bar)

安装尺寸 INSTALLATION DIMENSIONS

