

KRPEC-LAN

先导式溢流阀

说明 DESCRIPTION

A cartridge-style smooth-and-quiet balanced piston relief valve
 平稳响应型，先导滑阀式溢流阀

工作 OPERATION

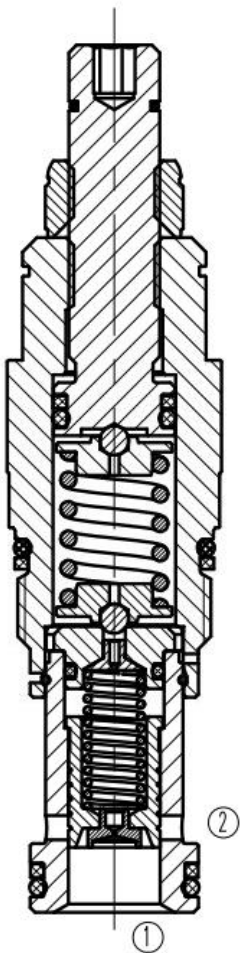
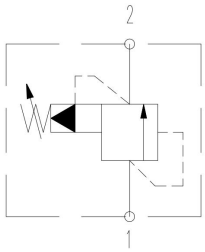
The valves are normally closed, pressure-limiting valves used to protect hydraulics components from pressure transients. When the pressure at the inlet (port ①) reaches the valve setting, the valve starts to open to tank (port ②), throttling flow to limit the pressure rise. The valves are accurate, have low pressure rise flow they are smooth and quiet, and are moderately fast.

Back pressure on the tank port ② is directly additive to the valve setting at a 1:1 ratio.

先导式滑阀型溢流阀用于保护系统的压力瞬时过载。当①口压力超过设定值时，①口到②口溢流过载，限制压力升高。

②口背压会按 1:1 叠加到阀的设定压力上。

符号 SYMBOL



技术参数 SPECIFICATIONS

工作压力 (Operating pressure): 350bar

流量 (Flow): 95L/min

内泄漏 (Internal Leakage): 30 cc/min. at 70bar.

弹簧调压范围 (Standard Spring Ranges):

A	7 to 210 bar, preset 预设定: 70bar
B	3.5 to 105 bar, preset 预设定: 70bar
C	10.5 to 420 bar, preset 预设定: 70bar
N	4 to 55 bar, preset 预设定: 28bar
Q	4 to 28 bar, preset 预设定: 14bar
W	10.5 to 315 bar, preset 预设定: 70bar

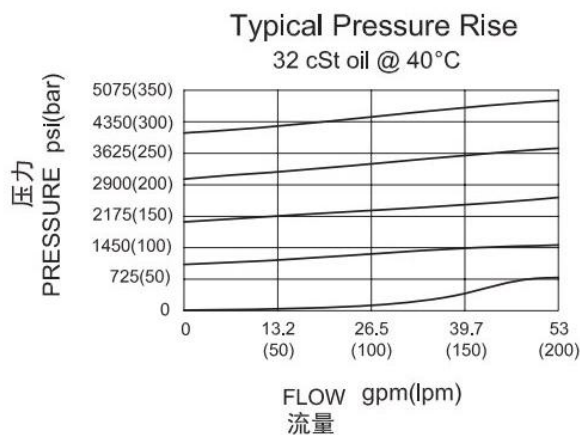
温度 (Temperature): -40° F to +250° F (-40° C to +120° C)

过滤 (Filtration): 参考过滤要求 (Reference filter requirements)

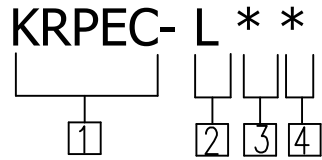
油液 (Fluids): Mineral-based fluids with viscosities of 7.4 to 420 cSt. (矿物油粘度)

插孔 (Cavity): T-10A

压力-流量曲线 PRESSURE DROP VS. FLOW



订货代号 TO ORDER



① 公司代号
Company code

② 控制方式 Control
L=Standard Screw Adjustment
K=Handknob

③ 弹簧调压范围 Spring Ranges
A=100-3000psi (7-210bar) Preset: 1000psi (70bar)
B=50-1500psi (3.5-105bar) Preset: 1000psi (70bar)
C=150-6000psi (10.5-420bar) Preset: 1000psi (70bar)
N=60-800psi (4-55bar) Preset: 400psi (28bar)
Q=60-400psi (4-28bar) Preset: 200psi (14bar)
W=150-4500psi (10.5-315bar) Preset: 1000psi (70bar)

④ 密封件 Sealing ring
N 丁腈橡胶 (标准型)
BUNA N (Std.)
V 氟橡胶 Fluorocarbom

安装尺寸 INSTALLATION DIMENSIONS

