

KCKEB-XCN

液控单向阀 (标准导压)

说明 DESCRIPTION

A cartridge-style Pilot to open, poppet-type check valve
锥阀式液控单向阀

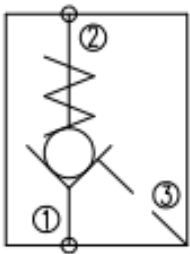
工作 OPERATION

The valve has a non-sealed pilot. It allows free flow from port ② to port ① and blocks flow from port ① to port ②. Flow will be allowed from port ① to port ② when sufficient pressure is applied at pilot ③. This pilot operated check valve has a 3:1 pilot ratio, meaning that at least one-third of the load pressure held at ① is required at pilot ③ to open the valve. Pressure at port ② directly opposes pilot pressure.

此阀具有非密封导压。当在②口的压力超过开启压力，②到①开启；在反方向，①到②关闭；

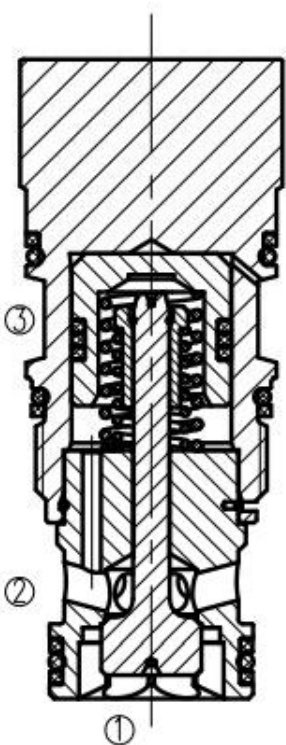
当在③口所需的液压力达到①口负载的 1/3 时，阀芯打开，①和②通，液控比为 3:1；②口压力将直接抵抗先导压力。

符号 SYMBOL

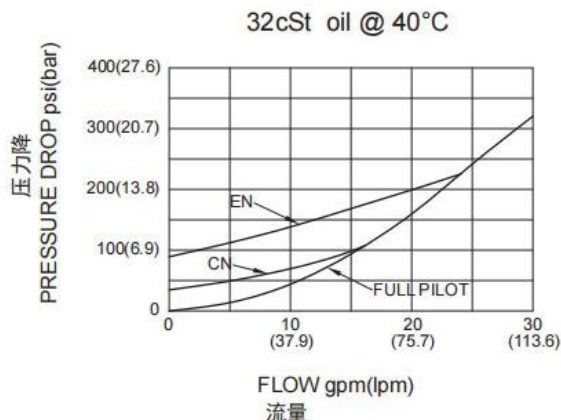


技术参数 SPECIFICATIONS

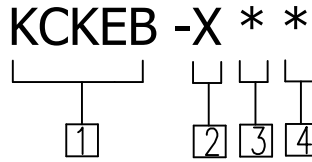
最大工作压力 (Maximum working pressure):	350bar
最大流量 (Maximum flow):	See PRESSURE DROP VS. FLOW graph.
内部泄漏 (Internal leakage):	1 drops/min. (滴/分) max. at 350bar
开启压力 (Crack Pressure):	C=2.0bar
控制比 (Pilot Ratio):	3:1
温度 (Temperature):	-40°F to +250°F (-40 °C to +120 °C)
过滤 (Filtration):	参考过滤要求 (Reference filter requirements)
油液 (Fluids):	Mineral-based fluids with viscosities of 7.4 to 420 cSt. (矿物油粘度)
插孔 (Cavity):	T-2A



压力-流量曲线 PRESSURE DROP VS. FLOW



订货代号 TO ORDER



1 公司代码
Company code

2 控制方式 Control
X= 常规 Standard Pilot)

3 开启压力 Cracking Pressure
C=2bar (30psi)
A=0.3bar (4psi)
B=1bar (15psi)
D=3.5bar (50psi)
E=5bar (75psi)
F=7bar (100psi)

4 油封 Seal Kits
N=Buna N
V=Viton

安装尺寸 INSTALLATION DIMENSIONS

