

KCOFA-XCN

液控单向阀 (液控关闭)

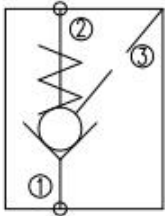
说明 DESCRIPTION

A cartridge-style pilot-to-close poppet-type check valve
 锥阀式液控关闭单向阀

工作 OPERATION

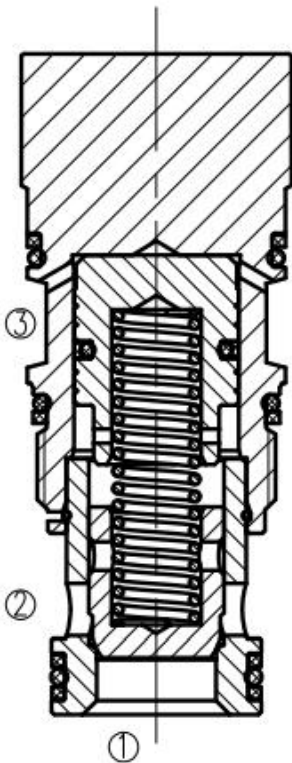
Pressure at ① overcomes the spring-bias poppet and allows free flow to ②. Flow in the opposite direction, from ② to ①, is blocked by the poppet. When the required pilot pressure is achieved at ③, the poppet is held closed to block flow between ① and ②. The pilot piston area to poppet seat area ratio is 1.8 to 1. 当在①口的压力超过开启压力, ①到②开启; 在反方向, ②到①关闭; 当液控口③压力达到一定时, 锥阀芯关闭, ①和②不通, 液控活塞面积与锥阀座面积比为 1.8:1.

符号 SYMBOL

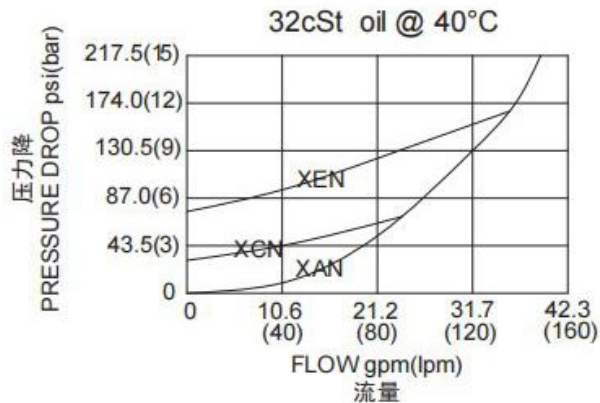


技术参数 SPECIFICATIONS

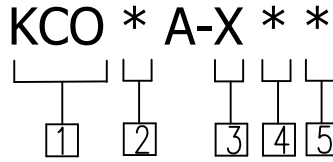
最大工作压力 (Maximum working pressure):	350Bar
最大流量 (Maximum flow):	See PRESSURE DROP VS. FLOW graph.
内部泄漏 (Internal leakage):	2 drops/min. (滴/分) max. at 350bar
开启压力 (Crack Pressures):	C=2.0bar
控制比 (Pilot Ratio):	1.8:1
温度 (Temperature):	-40°F to +250°F (-40°C to +120°C)
过滤 (Filtration):	参考过滤要求 (Reference filter requirements)
油液 (Fluids):	Mineral-based fluids with viscosities of 7.4 to 420 cSt. (矿物油粘度)
插孔 (Cavity):	T-2A



压力-流量曲线 PRESSURE DROP VS. FLOW



订货代号 TO ORDER



1 公司代码
Company code

2 流量 Flow
F=150L/min

3 控制方式 Control
X= 常规 Standard

4 开启压力 Cracking Pressure

A=0.3bar

B=1.0bar

C=2.0bar

D=3.5bar

E=5.0bar

F=7.0bar

J=9.5bar

5 油封 Seal Kits

N= 丁晴橡胶 Buna N

V= 氟橡胶 Viton

安装尺寸 INSTALLATION DIMENSIONS

