

KRVB0. M16

溢流阀 提升阀类型

说明 DESCRIPTION

A screw-in, cartridge style, direct acting, poppet type, normally closed hydraulic relief valve.

旋入式, 套筒式, 直动式, 提升式, 常闭
液压安全阀

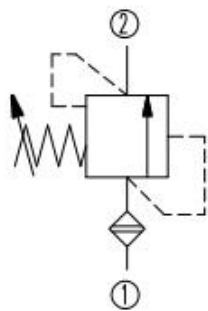
工作 OPERATION

When the pressure at the Inlet① reaches the valve setting, the valve starts to open to tank② providing a limited pressure rise. The reduced dimensions and the excellent response time make this valve ideally suited for pilot circuits.

Hysteresis is also extremely low.

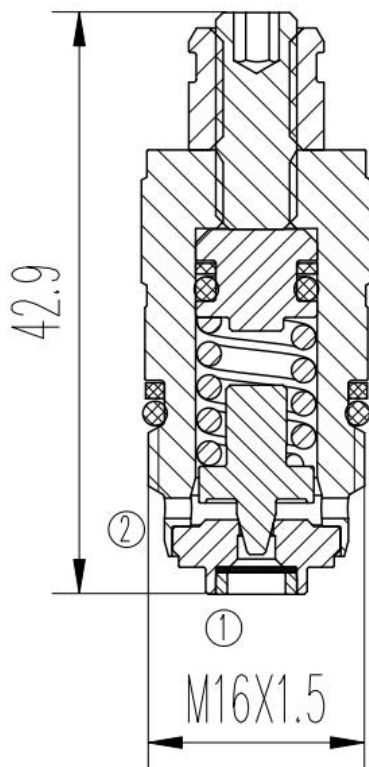
当入口①处压力达到阀门设定值时, 阀门开始向②打开, 提供有限的压力升高, 减少尺寸和良好的响应时间使该阀非常适合于先导电路, 滞后也降低。

符号 SYMBOL

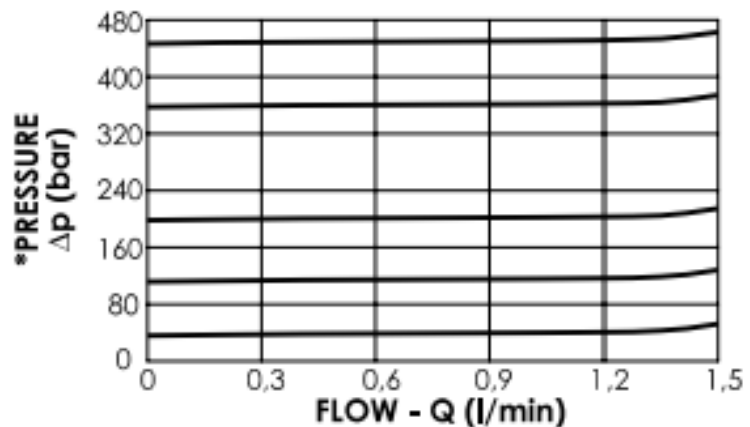


技术参数 SPECIFICATIONS

最大工作压力 (Maximum working pressure):	450Bar
最大流量 (Maximum flow):	1.5L/min
内部泄漏 (Internal leakage):	0.25cc/min to 80% of nominal set point
温度 (Temperature):	-30° C to +110° C
过滤 (Filtration):	参考过滤要求 (Reference filter requirements)
油液 (Fluids):	Mineral-based fluids with viscosities of 7.4 to 420 cSt. (矿物油粘度)
插孔 (Cavity):	特殊孔348

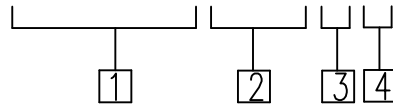


压力-流量曲线 PRESSURE DROP VS. FLOW



订货代号 TO ORDER

KRCVOB.M16.0 *



① 公司代码
Company code

④ 弹簧型号代码 Spring Model Code
Y=1-30
N=10-100
B=10-250
G=10-450

② M16
M16=公制M6*1.5
M16=METRIC M16*1.5

③ 0
0= 只订插件
0=Order plug-ins only

安装尺寸 INSTALLATION DIMENSIONS

