

# KNV16-20

节流阀

## 说明 DESCRIPTION

A cartridge-style manually-adjustable needle valve

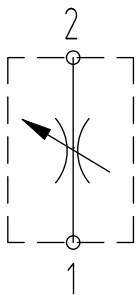
手动节流阀

## 工作 OPERATION

The valve varies flow restriction by adjusting needle in or out and will shut off when fully closed, These valves will meter flow in either direction.

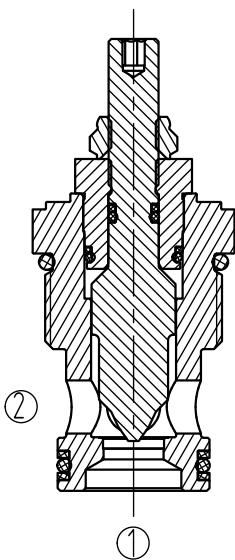
节流阀流量大小或关闭可通过调节螺杆来实现。

## 符号 SYMBOL

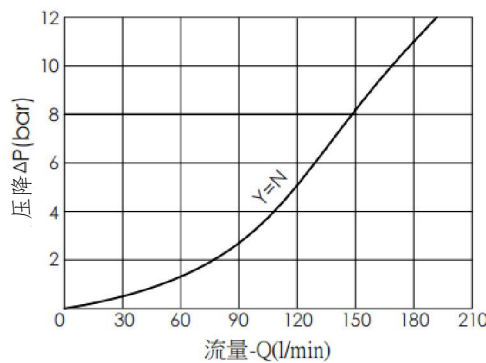


## 技术参数 SPECIFICATIONS

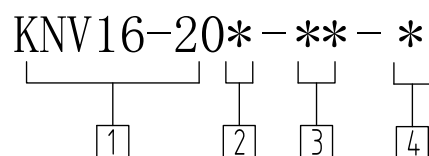
工作压力(Operating pressure):	350bar
流量(Flow):	150L/min
内泄露(Internal Leakage):	3drops/min(滴/分). max. at shut-off
温度(Temperature):	-40° C to + 120° C
过滤(Filtration):	参考过滤要求 (Reference filter requirements)
油液(Fluids):	Mineral-based fluids with viscosities of 7.4 to 420 cSt. (矿物油粘度)
插孔(Cavity):	VC16-2



## 压力-流量曲线 PRESSURE DROP VS. FLOW



订货代号 TO ORDER



1 公司代码  
Company code

2 调节选件  
A= 内六角调节  
B=直径1-1/2寸, 铝合金手柄  
C=选件A, 带螺帽盖  
D=顶部手柄, 带锁紧螺帽

3 阀块油口  
0= 只订插件  
0=Order plug-ins only  
4T=SAE4  
6T=SAE6  
2G=G1/4 其他螺纹油口也是可选择的  
3G=G3/8 Other Porting is Available

4 密封件 Sealing ring  
N 丁腈橡胶 (标准型)  
BUNA N (Std.)  
V 氟橡胶 Fluorocarbom

安装尺寸 INSTALLATION DIMENSIONS

Unit=Millimeters

