

KFC08

流量控制阀

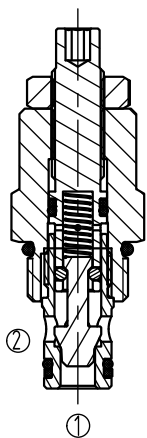
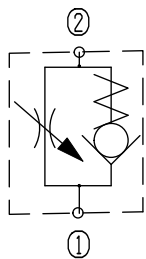
说明 DESCRIPTION

A cartridge-style adjustable flow control valve with reverse flow check
单向节流阀

工作 OPERATION

The valve varies flow restriction by adjusting needle in or out. Flow is metered from ② to ①. Free reverse flow is from ① to ②
节流阀流量大小可通过调节螺杆来实现. ②到①节流, ①到②开启.

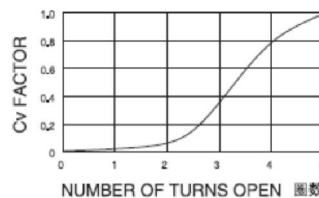
符号 SYMBOL



技术参数 SPECIFICATIONS

工作压力(Operating pressure):	250bar
流量(Flow):	See PRESSURE DROP VS. FLOW graph.
内泄露(Internal Leakage):	3drops/min(滴/分). max. at shut-off
温度(Temperature):	-40° C to + 120° C
过滤(Filtration):	参考过滤要求 (Reference filter requirements)
油液(Fluids):	Mineral-based fluids with viscosities of 7.4 to 420 cSt. (矿物油粘度)
插孔(Cavity):	VC08-2

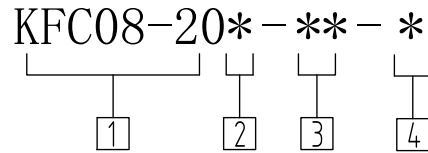
压力-流量曲线 PRESSURE DROP VS. FLOW



$$\text{FLOW IN GPM} = \frac{Cv \sqrt{P1 - P2}}{\sqrt{Gf}}$$

Cv = Flow Coefficient
P1 = Inlet Pressure (psi)
P2 = Outlet Pressure (psi)
Gf = specific gravity of medium at operating temperature in F.

订货代号 TO ORDER



1 公司代码
Company code

3 阀块油口
0= 只订插件
0=Order plug-ins only
4T=SAE4
6T=SAE6
2G=G1/4 其他螺纹油口也是可选择的
3G=G3/8 Other Porting is Available

2 调节选件
A= 内六角调节
B=直径1-1/2寸, 铝合金手柄
C=选件A, 带螺帽盖
D=顶部手柄, 带锁紧螺帽

4 密封件 Sealing ring
N 丁腈橡胶 (标准型)
BUNA N (Std.)
V 氟橡胶 Fluorocarbom

安装尺寸 INSTALLATION DIMENSIONS

Unit=Millimeters

