

# KCWGG-LGN

平衡阀

## 说明 DESCRIPTION

A cartridge-style vented counterbalance valve

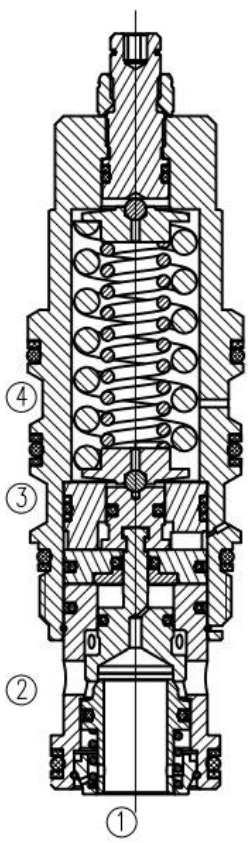
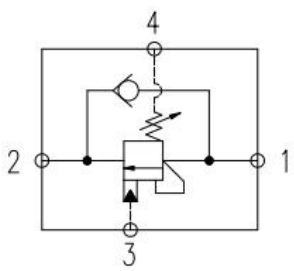
带外接口平衡阀

## 工作 OPERATION

Vented counterbalance valves with pilot assist are meant to control an overrunning load. The check valve allows free flow from port ② to port ① while a direct-acting, pilot-assisted relief valve controls flow from port ① to port ②. Pilot assist at port ③ lowers the effective setting of the relief valve at a rate determined by the pilot ratio. Backpressure at port ② does not affect the valve setting because the spring chamber references the vent (port ④).

带先导协助开启的带外接口型平衡阀用于控制超驰负载工况。油液从②口到①口单向自由流动；油液经直动，先导辅助从①口溢流到②口，③口是溢流辅助控制口，按控制比降低溢流功能的有效设定值。因弹簧腔通外接口（④口），所以②口的背压不会影响阀的设定值。

## 符号 SYMBOL

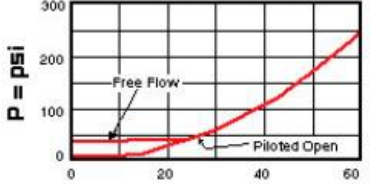


## 技术参数 SPECIFICATIONS

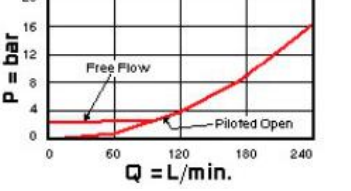
工作压力 (Operating pressure):	350bar
流量 (Flow):	240L/min
内泄漏 (Internal Leakage):	Max. 5 drops per minute at 350bar
单向阀开启压力 (Check valve opening pressure):	1.7bar
先导比 (Leader ratio):	5:1
温度 (Temperature):	-40° C to + 120° C
过滤 (Filtration):	参考过滤要求 (Reference filter requirements)
油液 (Fluids):	Mineral-based fluids with viscosities of 7.4 to 420 cSt. (矿物油粘度)
插孔 (Cavity):	SUN T-23A

## 压力-流量曲线 PRESSURE DROP VS. FLOW

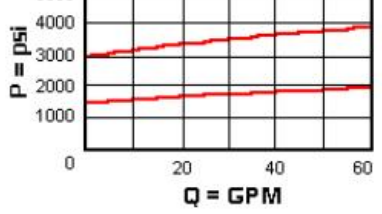
Free Flow and Piloted Open Pressure Drop



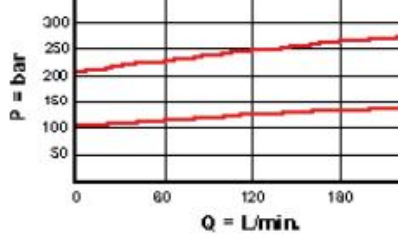
Free Flow and Piloted Open Pressure Drop



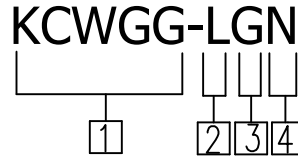
Typical Relief Characteristics



Typical Relief Characteristics



订货代号 TO ORDER



1 公司代号

4 密封件 Sealing ring

N 丁氟橡胶 (标准型)

BUNA N (Std.)

V 氟橡胶 Fluorocarbom

2 控制方式 Control

L= 标准螺钉调节

3 弹簧调压范围 Spring Ranges

G=2000-6000psi (140-420bar) Preset: 4000psi (280bar)

F=1000-2500psi (70-175bar) Preset: 2000psi (140bar)

安装尺寸 INSTALLATION DIMENSIONS

