

KSCGA-LWN

直动式 顺序阀

说明 DESCRIPTION

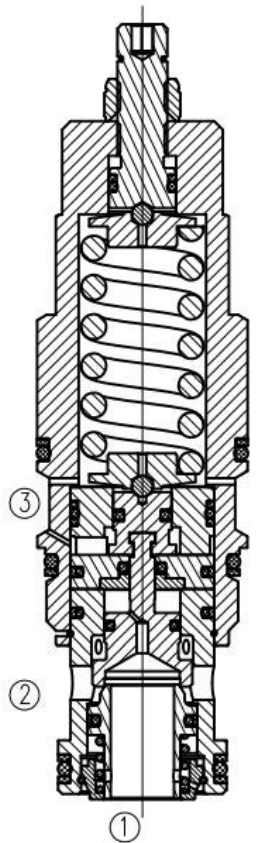
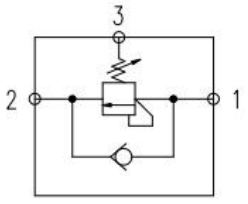
Direct acting sequence valve with reverse check valve.

直动式 顺序阀 带反向单向阀

工作 OPERATION

A direct-acting sequence valve with countercurrent check valve will supply the secondary oil circuit after the inlet (E1) pressure exceeds the valve setting. In addition, this type of valve has an integrated check valve that provides reverse flow from port 2(sequence port) to port 1(inlet). The sequence valve is set up to control port 1 pressure in relation to the pressure at the outlet (E3) 直动式带逆流单向阀的顺序阀将在进口 (口1) 压力超过阀的设定之后向次级油路供油。此外, 此类阀内部集成单向阀, 可以提供从口2 (顺序口) 到口1 (进口) 逆向液流。顺序阀的设定将控制与外泄口 (口3) 压力相关的口1压力。

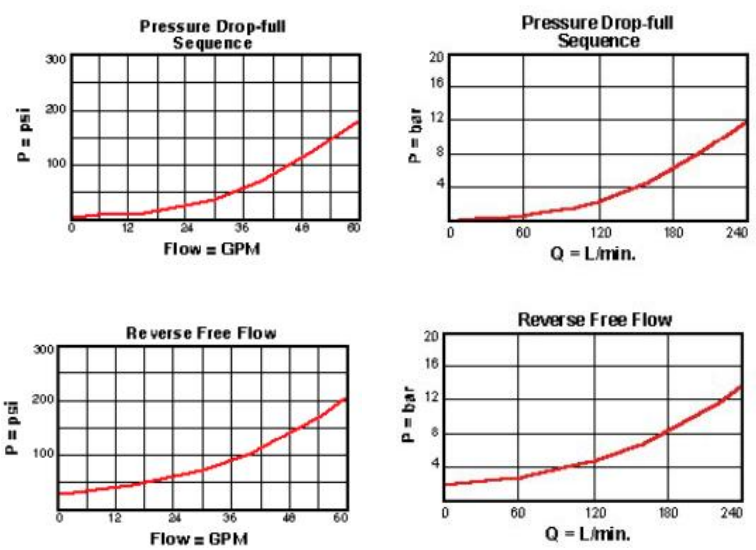
符号 SYMBOL



技术参数 SPECIFICATIONS

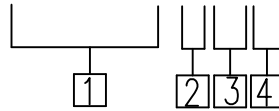
工作压力 (Operating pressure):	350bar
流量 (Flow):	240L/min
内泄漏 (Internal Leakage):	Max. 10 drops per minute at 350bar
单向开启压力 (Unidirectional opening pressure):	1.7bar
出厂设定 (Factory setting):	120bar, Q=15L/min
温度 (Temperature):	-40° C to + 120° C
过滤 (Filtration):	参考过滤要求 (Reference filter requirements)
油液 (Fluids):	Mineral-based fluids with viscosities of 7.4 to 420 cSt. (矿物油粘度)
插孔 (Cavity):	SUN T-17A

压力-流量曲线 PRESSURE DROP VS. FLOW



订货代号 TO ORDER

KSCGA-LWN



1 公司代号

4 密封件 Sealing ring

N 丁腈橡胶 (标准型)

BUNA N (Std.)

V 氟橡胶 Fluorocarbom

2 控制方式 Control

L= 标准螺钉调节

3 弹簧调压范围 Spring Ranges

A=100-3000psi (7-210bar) Preset:1000psi (70bar)

W=150-4500psi (10.5-315bar) Preset:1000psi (70bar)

B=50-1500psi (3.5-105bar) Preset:1000psi (70bar)

C=150-6000psi (10.5-420bar) Preset:1000psi (70bar)

D=25-800psi (1.7-55bar) Preset:400psi (28bar)

E=25-400psi (1.7-28bar) Preset:200psi (14bar)

N=60-800psi (4-55bar) Preset:400psi (28bar)

安装尺寸 INSTALLATION DIMENSIONS

