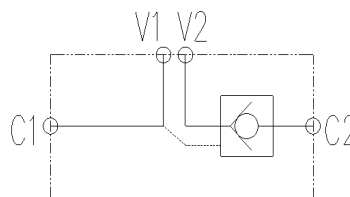


型号/TYPE	A	B	C	D	E	F	G	H	I	SW
KVRSE-G1/4	115	68	G1/4	38	∅7	7	40	30	13	24
KVRSE-G3/8	139	80	G3/8	40	∅8.5	15	50	40	16	27
KVRSE-G1/2	173	90	G1/2	40	∅8.5	15	60	40	20	30

### 符号/SYMBOL:



### 技术参数/TECHNICAL DATA:

应用材料/MATERIAL EMPLOYED

阀体/BODY: 钢/STEEL

阀芯/VALVES: 钢/STEEL

密封/SEALS: 丁腈胶/NBR

温度/TEMPERATURES

理想工作温度: +40°C~+70°C

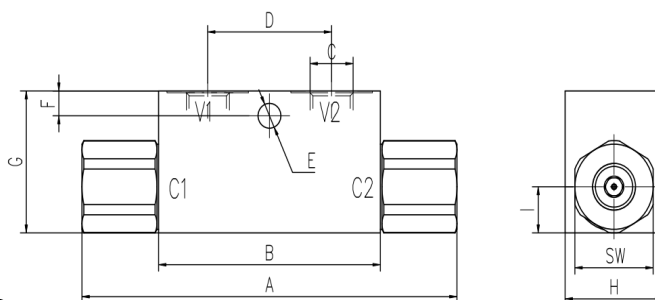
Ideal operating range between +40°C and +70°C

最低/最高环境温度: -20°C~+60°C

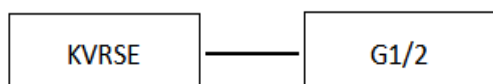
Min/Max environment temps -20°C~and

最高工作温度: 90°C/Max operating temperature 90°C

### 外形尺寸/OVER DIMENSION:



### 型号说明/MODEL CODE:



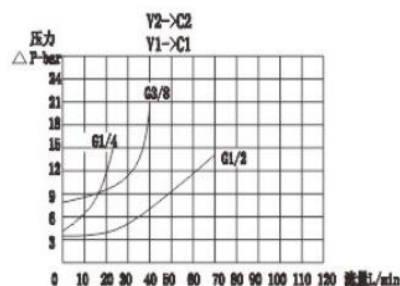
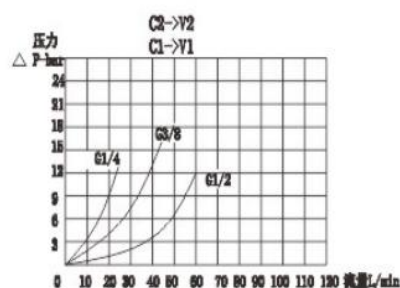
①

②

①单向液压锁系列代号/single pilot check valve series code :KVRSE型/KVRSE type

②阀体连接螺纹形式/connect thread dimension:BBSP

### 流量曲线图/FLOW DIAGRAM:



型号/TYPE	最大压力 (bar)		最大流量 (L/min)	先导比 (pilot ratio)	开启压力 (cracking pressure) (bar)
	钢/steel	铝/aluminum			
KVRSE-G1/4	350	200	20	4.5:1	3.5
KVRSE-G3/8			50	4:1	
KVRSE-G1/2	300	80			