

KNV12

节流阀

说明 DESCRIPTION

A cartridge-style manually-adjustable needle valve

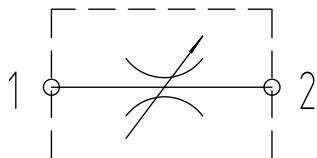
手动节流阀

工作 OPERATION

The valve varies flow restriction by adjusting needle in or out and will shut off when fully closed, These valves will meter flow in either direction.

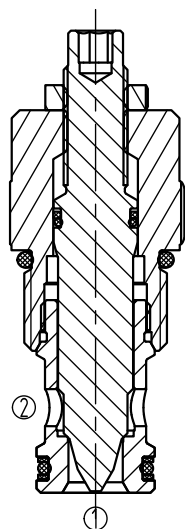
节流阀流量大小或关闭可通过调节螺杆来实现.

符号 SYMBOL

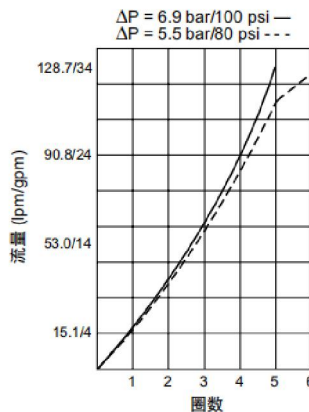


技术参数 SPECIFICATIONS

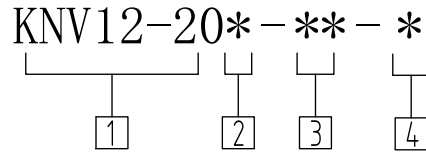
工作压力 (Operating pressure):	250bar
流量 (Flow):	See FLOW CHARACRISTICS chart
内泄露 (Internal Leakage):	3drops/min(滴/分). max. at250bar
温度 (Temperature):	-40° C to + 120° C
过滤 (Filtration):	参考过滤要求 (Reference filter requirements)
油液 (Fluids):	Mineral-based fluids with viscosities of 7.4 to 420 cSt. (矿物油粘度)
插孔 (Cavity):	VC12-2



压力-流量曲线 PRESSURE DROP VS. FLOW



订货代号 TO ORDER



① 公司代码
Company code

② 调节选件
A= 内六角调节
B=直径1-1/2寸, 铝合金手柄
C=选件A, 带螺帽盖
D=顶部手柄, 带锁紧螺帽

③ 阀块油口
0= 只订插件
0=Order plug-ins only
4T=SAE4
6T=SAE6
2G=G1/4
3G=G3/8

④ 密封件 Sealing ring
N 丁腈橡胶 (标准型)
BUNA N (Std.)
V 氟橡胶 Fluorocarbom

安装尺寸 INSTALLATION DIMENSIONS

Unit=Millimeters

