

KFR08-20A

流量控制阀， 压力补偿型

说明 DESCRIPTION

A cartridge-style adjustable pressure-compensated flow control valve

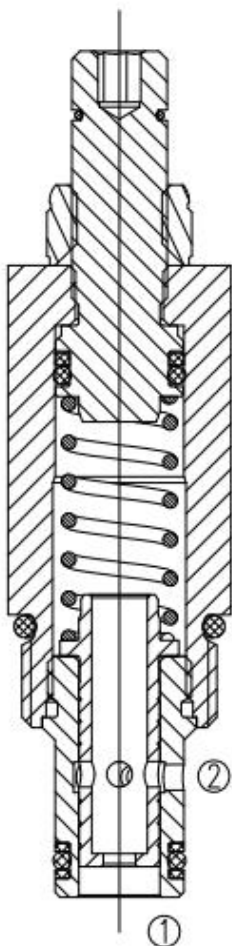
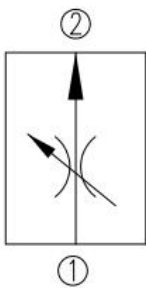
压力补偿可调型， 插装式流量阀

工作 OPERATION

The valve maintains a constant flow within specified accuracies from ①to②regardless of downstream load pressure. When flow produces a minimum predetermined pressure differential across the compensator spool control orifice, the spool shifts against the spring force to throttle the flow and maintain the flow setting. Reverse flow is not regulated.

不管负载压力如何变化，从①到②口的流量都能保持在一定的范围内。当油通过固定节流孔时，引起极小的压力差，阀芯开始响应负载变化，通过压力补偿，可维持精确的流量。油液从②到①反方向流动，没有压力补偿。

符号 SYMBOL

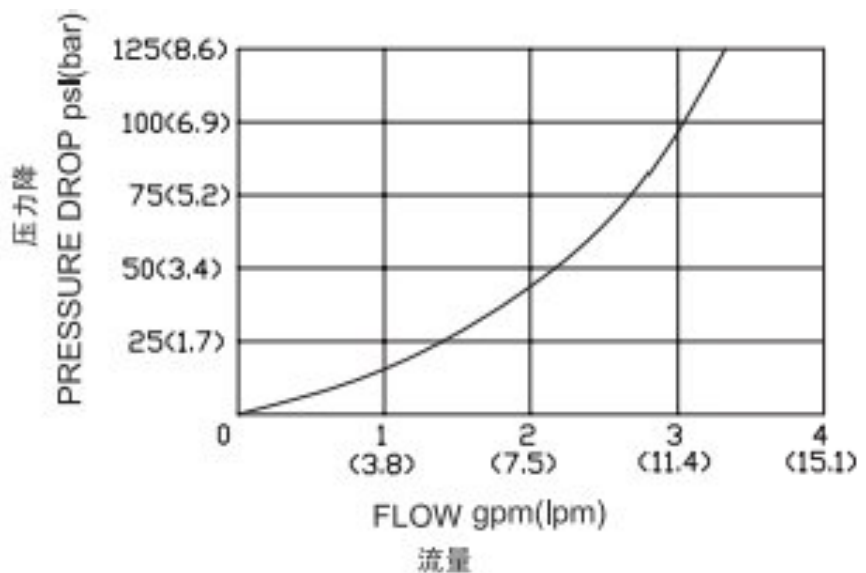


技术参数 SPECIFICATIONS

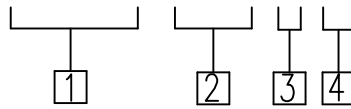
| | |
|--------------------------------------|--|
| 工作压力 (Operating pressure): | 240bar |
| 流量设定 (Flow Setting): | 2-20 l/min |
| 内流量控制精度 (Flow Maintenance Accuracy): | ±10% |
| 温度 (Temperature): | -40° C to +120° C |
| 过滤 (Filtration): | 参考过滤要求 (Reference filter requirements) |
| 油液 (Fluids): | Mineral-based fluids with viscosities of 7.4 to 420 cSt. (矿物油粘度) |
| 插孔 (Cavity): | VC08-2 |

压力-流量曲线 PRESSURE DROP VS. FLOW

①to②压力曲线
32cSt oil @ 40° C



KFR08-20A-0-N



1 公司代码
Company code

2 20A
流量设定 Flow Setting
空白 Blank=Omit for
setting standard
省略位标准设定 (10L/min)

3 0
0= 只订插件
0=Order plug-ins only

4 密封件 Sealing ring
N 丁氟橡胶 (标准型)
BUNA N (Std.)
V 氟橡胶 Fluorocarbom

安装尺寸 INSTALLATION DIMENSIONS

