

# KPD10-34

二位三通液控换向阀

## 说明 DESCRIPTION

A cartridge-style 2-way pilot-operated spool-type external-vent directional valve

二位，三通，外控外排，  
螺纹插装方向阀

## 工作 OPERATION

Unpiloted, the valve blocks flow from ③ to ② bidirectionally.

V is a spring chamber vent-to-atmosphere, which is internally O-ring sealed from the cartridge flow paths.

On remote pilot signal at ①, the valve shifts to open ② to ③ bidirectionally.

Because of the vented spring chamber, the cartridge may be fully pressurized at any port without affecting required pilot pressure.

无液控时，此阀截止油液从③向②双向流动。V是可通大气的弹簧腔，该腔采用O型圈密封内部油道，防止油液流入该腔。当远端液控信号到达①时，阀芯移动，②到③双向接通。由于采用带泄油孔的弹簧室，因此可以在任何油口对插件完全加压，而不会影响所需的液控压力。

## 技术参数 SPECIFICATIONS

工作压力 (Operating pressure): 240bar

流量 (Flow): See PRESSURE DROP VS. FLOW graph

内泄漏 (Internal Leakage): 82 cc/min. max. at 207 bar

先导口压力要求 (Pilot Pressure Required):

(采用 7.6 bar (110 psi) 弹簧):  
 阀芯位移: 7.6 bar (110 psi)  
 阀芯完全换向: 9.1 bar (132 psi)

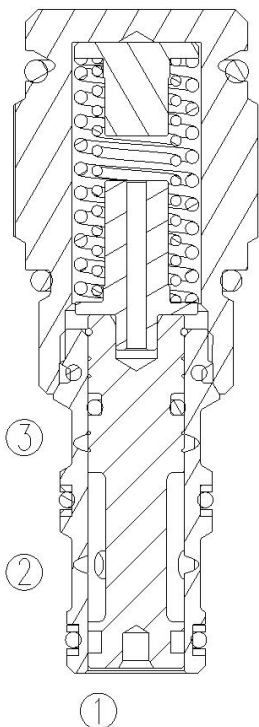
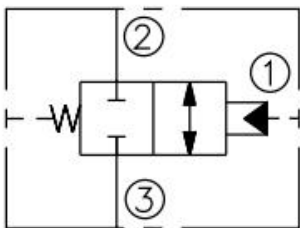
温度 (Temperature): -40° C to + 120° C

过滤 (Filtration): 参考过滤要求 (Reference filter requirements)

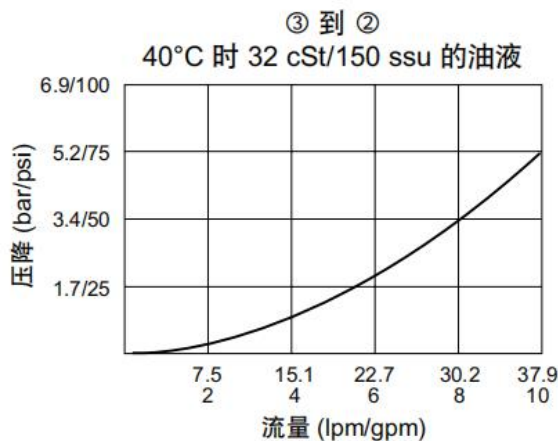
油液 (Fluids): Mineral-based fluids with viscosities of 7.4 to 420 cSt.  
 (矿物油粘度)

插孔 (Cavity): VC10-3

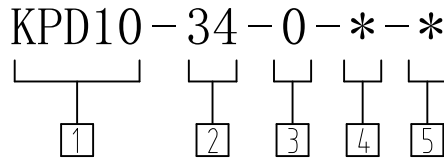
## 符号 SYMBOL



## 压力-流量曲线 PRESSURE DROP VS. FLOW



订货代号 TO ORDER



1 公司代码  
Company code

2 功能  
34= 二位二通液控换向阀  
Piloted Two-wat Spool  
Directional Valve

3 0  
0= 只订插件  
0=Order plug-ins only

4 密封件 Sealing ring  
N 丁氟橡胶 (标准型)  
BUNA N (Std.)

V 氟橡胶 Fluorocarbom

5 弹簧规格 Spring specifications  
60 =60Psi (4.1bar)  
110=110Psi (7.6bar)  
170=170Psi (11.7bar)

备注 Description  
如有其它特殊要求, 请联系工厂  
For other special requirements,  
please contact the factory

安装尺寸 INSTALLATION DIMENSIONS

