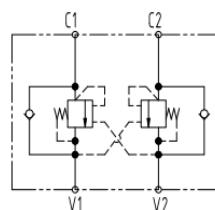


型号/TYPE	L	L1	L2	H	S	O-ring
KLCD-G3/8DE-FL	150	250	110	60	30	12.8X2.4
KLCD-G1/2DE-FL	150	250	110	65	35	12.8X2.4

### 符号/SYMBOL:



### 技术参数/TECHNICAL DATA:

应用材料/MATERIAL EMPLOYED

阀体/BODY: 钢/STEEL

阀芯/VALVES: 钢/STEEL

密封/SEALS: 丁腈胶/NBR

温度/TEMPERATURES

理想工作温度: +40°C~+70°C

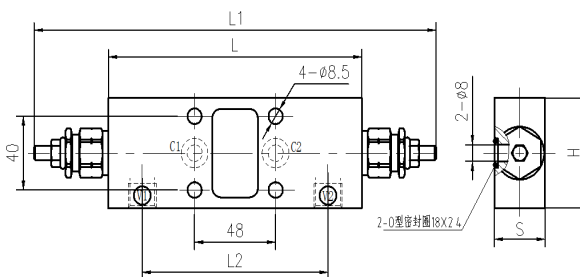
Ideal operating range between +40°C and +70°C

最低/最高环境温度: -20°C~+60°C

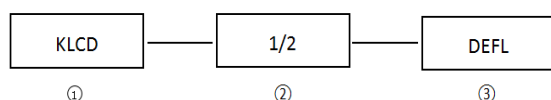
Min/Max environment temps -20°C~and

最高工作温度: 90°C/Max operating temperature 90°C

### 外形尺寸/OVER DIMENSION:



### 型号说明/MODEL CODE:



①液控平衡阀系列代号/Overcenter valve series code :KLCD-DEFL型/KLCD-DEFL type

②阀体连接螺纹形式/connect thread dimension:BBSP

③双向平衡阀/Double overcenter

型号/TYPE	最大压力 (bar)		最大流量 (L/min)	先导比 (pilot ratio)	V1-V2
	钢/steel	铝/aluminum			
KLCD-G3/8DE-FL	350	210	40	4.5:1	G3/8
KLCD-G1/2DE-FL			60		G1/2

### 流量曲线图/FLOW DIAGRAM:

