

型号/TYPE	L	L1	L2	L3	H	S
KLCD-G3/8-SE-FL2	110	150	91	20	60	30
KLCD-G1/2-SE-FL2	110	150	91	20	65	35

### 技术参数/TECHNICAL DATA:

应用材料/MATERIAL EMPLOYED

阀体/BODY: 钢/STEEL

阀芯/VALVES: 钢/STEEL

密封/SEALS: 丁腈胶/NBR

温度/TEMPERATURES

理想工作温度: +40°C~+70°C

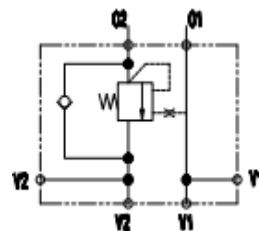
Ideal operating range between +40°C and +70°C

最低/最高环境温度: -20°C~+60°C

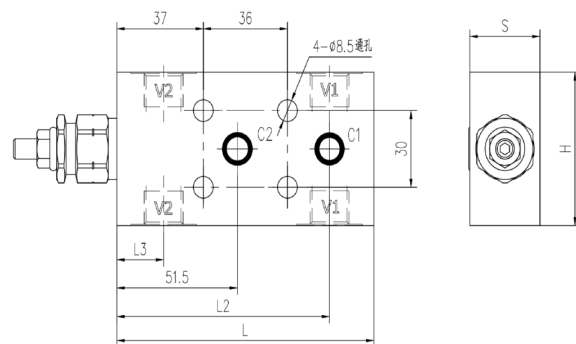
Min/Max environment temps -20°C~and

最高工作温度: 90°C/Max operating temperature 90°C

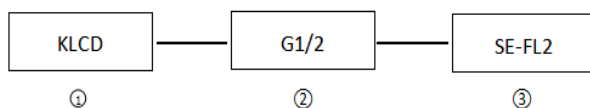
### 图形符号/SYMBOL:



### 外形尺寸/OVER DIMENSION:



### 型号说明/MODEL CODE:

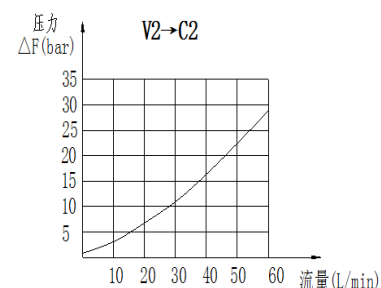
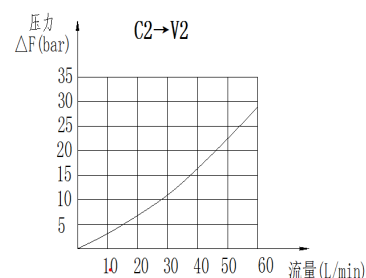


①液控单平衡阀系列代号/single overcenter valve

②阀体连接螺纹形式/connect thread dimension: BBSP

③单向平衡阀板式连接/ Single overcenter valves flangeable

### 流量曲线图/FLOW DIAGRAM:



型号/TYPE	最大压力 (bar)		最大流量 (L/min)	先导比 (pilot ratio)	V1-V2	C1-C2
	钢/steel	铝/aluminum				
KLCD-G3/8-SE-FL2	350	210	40	4.5:1	G3/8	Ø9
KLCD-G1/2-SE-FL			60		G1/2	Ø9