



KSXS08S-60/350



技术参数/TECHNICAL DATA:

应用材料/MATERIAL EMPLOYED

阀体/BODY: 钢/STEEL

阀芯/VALVES: 钢/STEEL

密封/SEALS: 丁腈胶/NBR

温度/TEMPERATURES

理想工作温度: +40°C~+70°C

Ideal operating range between +40°C and +70°C

最低/最高环境温度: -20°C~+60°C

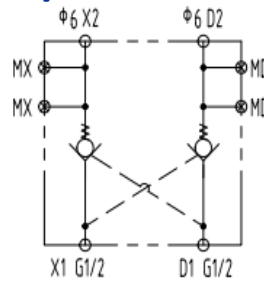
Min/Max environment temps -20°C~and +60°C

最高工作温度: 90°C/Max operating temperature 90°C

公称压力/Nominal Pressure:

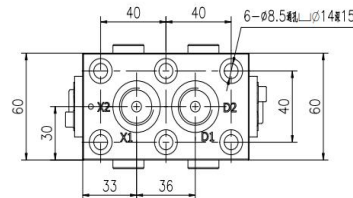
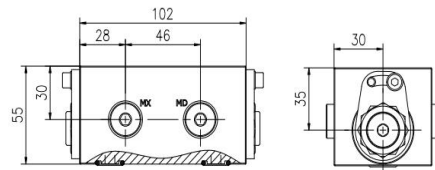
额定流量/Rated Flow: 60L/min 先导比/Pilot Ratio: 9:1

符号/SYMBOL:

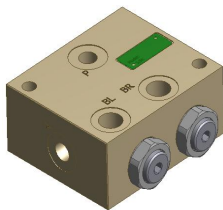


D1、X1: G1/2
MD、MX(seal):

外形尺寸/OVER DIMENSION:



KPHGFZ02-35/250



技术参数/TECHNICAL DATA:

应用材料/MATERIAL EMPLOYED

阀体/BODY: 钢/STEEL

阀芯/VALVES: 钢/STEEL

密封/SEALS: 丁腈胶/NBR

温度/TEMPERATURES

理想工作温度: +40°C~+70°C

Ideal operating range between +40°C and +70°C

最低/最高环境温度: -20°C~+60°C

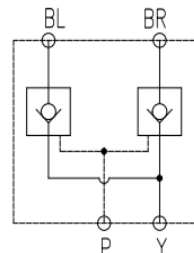
Min/Max environment temps -20°C~and +60°C

最高工作温度: 90°C/Max operating temperature 90°C

公称压力/Nominal Pressure: 25Mpa

额定流量/Rated Flow: 75L/min 先导比/Pilot Ratio: 8:1

符号/SYMBOL:



外形尺寸/OVER DIMENSION:

