

# KPS10A-40

二位三通顺序阀

## 说明 DESCRIPTION

A cartridge-style, 2-position, 3-way, pilot-operated, spool-type, Atmospheric Vent directional valve  
 二位，三通，液控，透大气型，  
 螺纹插装换向阀

## 工作 OPERATION

In neutral position (unpiloted), the valve allows flow from port ③ to ② bidirectionally, while port ④ is blocked. The spring chamber is vented to atmosphere, which is internally O-ring sealed from the cartridge flow paths. On remote pilot signal at port ①, the valve's spool shifts to open port ③ to ④, while port ② is blocked. Because of the vented spring chamber, the cartridge may be fully pressurized at any port without affecting required pilot pressure.

在初始位置（无液控）时，此阀允许油液从③到②双向流动，④口不通。此阀弹簧腔通大气，阀内弹簧腔与内部油路用 O 形圈密封。

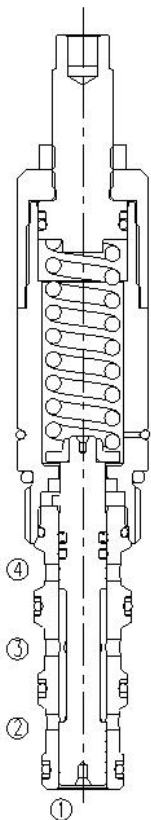
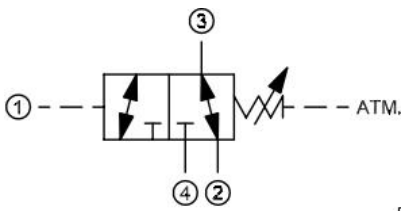
当远端信号到达①口时，阀芯移动，③到④双向流通，②口不通。

由于此阀弹簧腔通大气，所有油口均可以加载全压力，而不影响所需的液控压力。

## 技术参数 SPECIFICATIONS

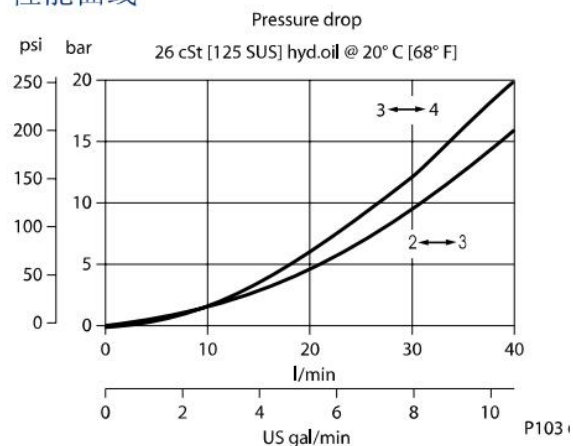
工作压力 (Operating pressure):	315bar
流量 (Flow):	See PRESSURE DROP VS. FLOW graph
内泄漏 (Internal Leakage):	82 cc/min. max. at 250 bar
弹簧调压范围 (Standard Spring Ranges):	2.8-27.6 bar, preset 预设定: 13.8bar 15.2-1600 bar, preset 预设定: 72.5bar
温度 (Temperature):	-40° C to + 100° C
过滤 (Filtration):	参考过滤要求 (Reference filter requirements)
油液 (Fluids):	Mineral-based fluids with viscosities of 7.4 to 420 cSt. (矿物油粘度)
插孔 (Cavity):	VC10-4

## 符号 SYMBOL

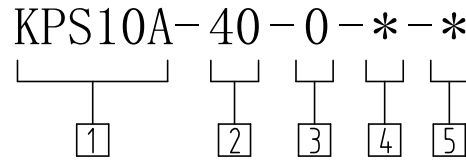


## 压力-流量曲线 PRESSURE DROP VS. FLOW

### 性能曲线



订货代号 TO ORDER



1 公司代码  
Company code

2 功能  
40= 二位三通顺序阀  
Pilotd Three-way Spool  
Directional Valve

3 0  
0= 只订插件  
0=Order plug-ins only

4 密封件 Sealing ring  
N 丁氟橡胶 (标准型)  
BUNA N (Std.)  
V 氟橡胶 Fluorocarbom

5 弹簧规格 Spring specifications  
04 =40-400Psi (2.8-27.6bar)  
22 =220-1600Psi (15.2-110bar)

备注 Description  
如有其它特殊要求, 请联系工厂  
For other special requirements,  
please contact the factory

安装尺寸 INSTALLATION DIMENSIONS

