

KFR10-39A

流量控制阀，压力补偿型（节流孔可调节）

说明 DESCRIPTION

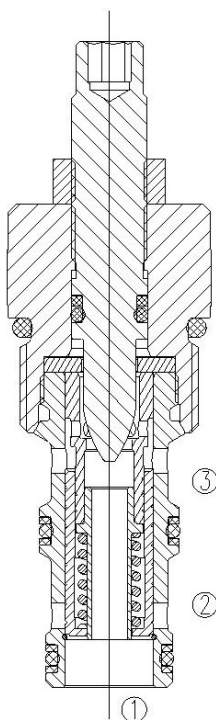
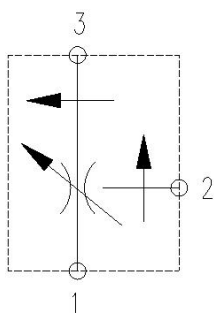
A cartridge-style adjustable pressure-compensated flow control valve

压力补偿型，
插装可调式流量阀

工作 OPERATION

The valve maintains a constant flow rate from ③ regardless of load pressure changes in the system downstream of ③, or in the bypass leg at ②. Reverse flow (③ to ①) bypasses the control orifice. Bypass port ② may be fully pressurized. The regulated flow increases from closed to fully open, with counter-clockwise rotation of the knob. 不管③口负载压力或旁路②口负载压力如何变化，从③口流出的流量维持不变。反向流液（③流向①）不经过控制节流孔。旁路②口可作为工作口。逆时针转动手柄，调节流量从闭合到完全打开时逐渐增加。

符号 SYMBOL



技术参数 SPECIFICATIONS

工作压力 (Operating pressure):	240bar
流量 (Flow):	See PRESSURE DROP VS. FLOW graph
流量设定 (Flow Setting):	[3油口使用] 3-ported regulated flow: 0-38 Lpm [2油口使用] 2-ported regulated flow: 0-34 Lpm
温度 (Temperature):	-40° C to + 100° C
过滤 (Filtration):	参考过滤要求 (Reference filter requirements)
油液 (Fluids):	Mineral-based fluids with viscosities of 7.4 to 420 cSt. (矿物油粘度)
插孔 (Cavity):	VC10-3

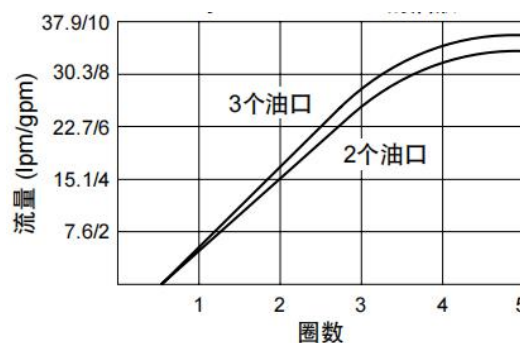
压力-流量曲线 PRESSURE DROP VS. FLOW

Regulated Flow vs. Turns [32cSt oil @ 40° C]

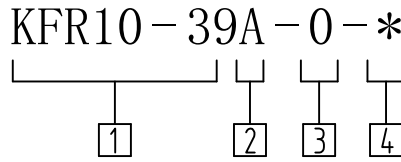
油口③输入压力103bar (103bar at Port③)

两个油口: 进油压力123bar (2-Ported: at 123bar inlet pressure)

三个油口: 入口流量38lpm (3-Ported: at 38lpm inlet flow)



订货代号 TO ORDER



① 公司代码
Company code

④ 密封件 Sealing ring
N 丁氟橡胶 (标准型)
BUNA N (Std.)

② 调节选件
A= 内六角调节
5' Hex Allen head

V 氟橡胶 Fluorocarbom

③ 0
0= 只订插件
0=Order plug-ins only

安装尺寸 INSTALLATION DIMENSIONS

