

KPCI-08M

液控单向阀

说明 DESCRIPTION

A cartridge-style
pilot-to-open
poppet-type check valve
锥阀式液控单向阀

工作 OPERATION

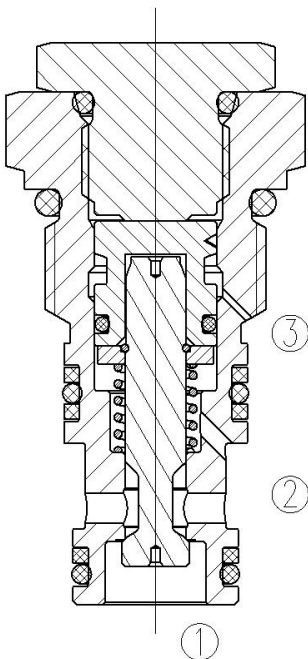
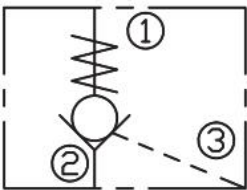
The valve allows flow from ② to ①, while normally blocking flow from ① to ②. Flow will be allowed from ① to ② when sufficient pressure is applied at ③. The cartridge has a 4:1 pilot ratio, meaning that at least one-fourth of the load pressure held at ① is required at ③ to open the valve.

当在②口的压力超过开启压力，②到①开启；在反方向，①到②关闭；
当在③口所需的液压力达到①口负载的 1/4 时，阀芯打开，①和②通，液控比为 4:1。

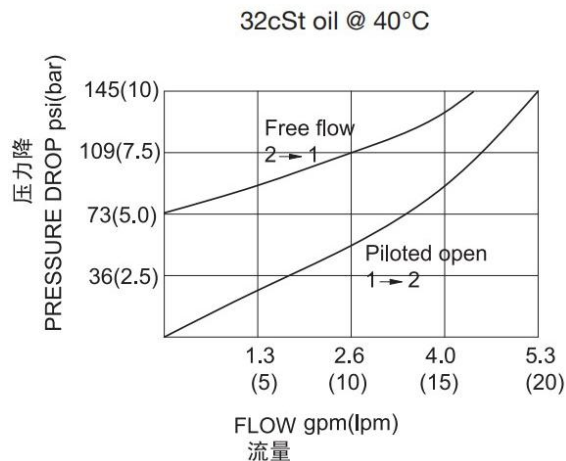
技术参数 SPECIFICATIONS

工作压力 (Operating pressure):	350bar
流量 (Flow):	See PRESSURE DROP VS. FLOW graph
内泄漏 (Internal Leakage):	2 drops/min(滴/分). max. at 350bar
开启压力 (Crack Pressures):	5.0=5.0bar
控制比 (Pilot Ratio):	4: 1
温度 (Temperature):	-40° C to + 100° C
过滤 (Filtration):	参考过滤要求 (Reference filter requirements)
油液 (Fluids):	Mineral-based fluids with viscosities of 7.4 to 420 cSt. (矿物油粘度)
插孔 (Cavity):	08M-3

符号 SYMBOL

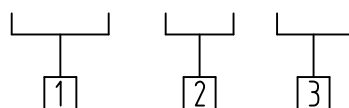


压力-流量曲线 PRESSURE DROP VS. FLOW



订货代号 TO ORDER

KPCI-08M-5.0



① 功能

KPCI= 液控单向阀

Pilot to Open Check Valve

③ 开启压力 Cracking Pressure

5.0=5.0bar

② 规格 Size

08M=08M 规格

安装尺寸 INSTALLATION DIMENSIONS

