

# KPD10-41

二位三通液控换向阀

## 说明 DESCRIPTION

A cartridge-style 3-way pilot-operated spool-type internal-vent directional valve

二位，三通，外控内排，  
螺纹插装 方向阀

## 工作 OPERATION

On no remote pilot signal at ①, the valve allows flow from ③ to ④, while flow is blocked at ②.

On remote pilot signal at ①, the valve shifts to open from ③ to ②, while blocking flow at ④.

Since ④ is common to the spring chamber, pressure on ④ will directly (1:1) affect the pilot pressure required, and must always be added to the bias spring value.

当①口没有先导压力信号时，③到④通，②不通；

当①口有先导压力信号时，阀芯换向，③到②通，④不通；

由于④口与弹簧腔通，所以④口的压力将直接 1:1影响先导压力要求。

## 技术参数 SPECIFICATIONS

工作压力 (Operating pressure): 250bar

流量 (Flow): See PRESSURE DROP VS. FLOW graph

内泄漏 (Internal Leakage): 82 cc/min. max. at 250 bar

先导口压力要求 (Pilot Pressure Required):

To Spool Crossover	-4.1 bar (60psi)	Spring: 4.7 bar (68.2psi)
	-7.6 bar (110psi)	Spring: 7.6 bar (110psi)
To Full Spool Shift	-4.1 bar (60psi)	Spring: 5.2 bar (75psi)
	-7.6 bar (110psi)	Spring: 8.6 bar (125psi)

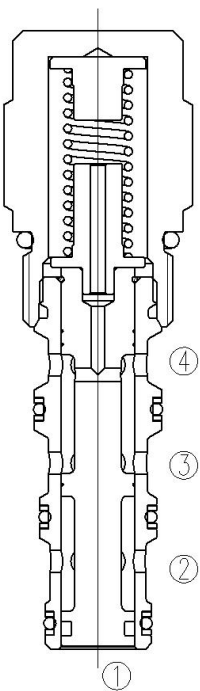
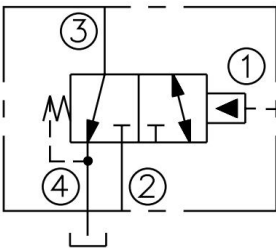
温度 (Temperature): -40° C to + 100° C

过滤 (Filtration): 参考过滤要求 (Reference filter requirements)

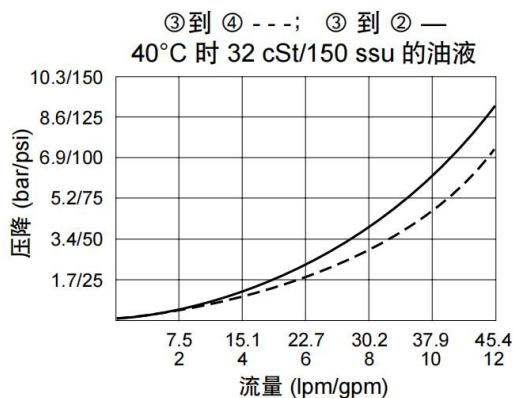
油液 (Fluids): Mineral-based fluids with viscosities of 7.4 to 420 cSt.  
(矿物油粘度)

插孔 (Cavity): VC10-4

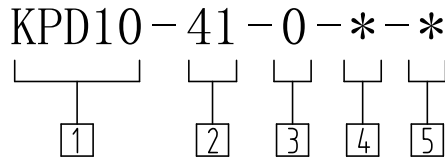
## 符号 SYMBOL



## 压力-流量曲线 PRESSURE DROP VS. FLOW



订货代号 TO ORDER



1 公司代码  
Company code

2 功能  
41= 二位三通液控换向阀  
Piloted Three-way Spool  
Directional Valve

3 0  
0= 只订插件  
0=Order plug-ins only

4 密封件 Sealing ring  
N 丁氟橡胶 (标准型)  
BUNA N (Std.)  
V 氟橡胶 Fluorocarbom

5 弹簧规格 Spring specifications  
60 =60Psi (4.1bar)  
110=110Psi (7.6bar)  
170=170Psi (11.7bar)

备注 Description  
如有其它特殊要求, 请联系工厂  
For other special requirements,  
please contact the factory

安装尺寸 INSTALLATION DIMENSIONS

